

For Research Use Only

# RFC3 Monoclonal antibody

Catalog Number: 68290-1-Ig



## Basic Information

Catalog Number:

68290-1-Ig

Size:

150ul, Concentration: 1000 ug/ml by Nanodrop;

Source:

Mouse

Isotype:

IgG1

Immunogen Catalog Number:

AG28365

GenBank Accession Number:

BC000149

GeneID (NCBI):

5983

UNIPROT ID:

P40938

Full Name:

replication factor C (activator 1) 3, 38kDa

Calculated MW:

40 aa, 6 kDa

Observed MW:

38 kDa

Purification Method:

Protein G purification

CloneNo.:

2G3A8

Recommended Dilutions:

WB 1:5000-1:50000

## Applications

Tested Applications:

WB, ELISA

Species Specificity:

Human, Mouse, Rat

Positive Controls:

WB : LNCaP cells, HSC-T6 cells, NIH/3T3 cells, HeLa cells, HEK-293 cells, HepG2 cells, Jurkat cells, K-562 cells

## Background Information

RFC3, also known as RFC38, is a 356 amino acid protein, which localizes in the nucleus. Replication factor C (RFC) is a component of the eukaryotic DNA polymerase. In all eukaryotic cell cycles, it is essential for DNA duplication, DNA injury repair, and checkpoint control. RFC consists of five subunits (RFC1-5). The interrelationships between RFC2, RFC3, and the c-MYC oncogene (transcription factor) can induce cell division and proliferation. RFC3 is associated with liver, breast, esophageal and ovarian cancer, and serves a critical role in cellular proliferation, invasion, and metastasis. RFC3 exists in two isoforms with molecular weights of 34 kDa and 38-40 kDa.

## Storage

Storage:

Store at -20°C. Stable for one year after shipment.

Storage Buffer:

PBS with 0.02% sodium azide and 50% glycerol pH 7.3.

Aliquoting is unnecessary for -20°C storage

\*\*\* 20ul sizes contain 0.1% BSA

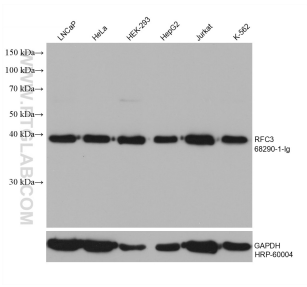
For technical support and original validation data for this product please contact:

T: 1 (888) 4PTGLAB (1-888-478-4522) (toll free in USA), or 1(312) 455-8498 (outside USA)

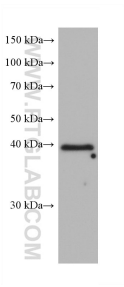
E: [proteintech@ptglab.com](mailto:proteintech@ptglab.com)  
W: [ptglab.com](http://ptglab.com)

This product is exclusively available under Proteintech Group brand and is not available to purchase from any other manufacturer.

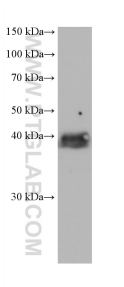
Selected Validation Data



Various lysates were subjected to SDS PAGE followed by western blot with 68290-1-Ig (RFC3 antibody) at dilution of 1:10000 and incubated at room temperature for 1.5 hours. The membrane was stripped and reblotted with HRP-conjugated GAPDH Monoclonal antibody (HRP-60004) as loading control.



NIH/3T3 cells were subjected to SDS PAGE followed by western blot with 68290-1-Ig (RFC3 antibody) at dilution of 1:10000 incubated at room temperature for 1.5 hours.



HSC-T6 cells were subjected to SDS PAGE followed by western blot with 68290-1-Ig (RFC3 antibody) at dilution of 1:10000 incubated at room temperature for 1.5 hours.