

For Research Use Only

Cytokeratin 5/6 Monoclonal antibody

Catalog Number: 68295-1-Ig



Basic Information

Catalog Number: 68295-1-Ig	GenBank Accession Number: BC034535	Purification Method: Protein G purification
Size: 150ul , Concentration: 1000 ug/ml by Nanodrop and 743 ug/ml by Bradford method using BSA as the standard;	GeneID (NCBI): 3854	CloneNo.: 1F9E1
Source: Mouse	UNIPROT ID: P04259	Recommended Dilutions: WB 1:5000-1:50000 IHC 1:1150-1:4600 IF-P 1:200-1:800 IF/ICC 1:400-1:1600
Isotype: IgG1	Full Name: keratin 6B	
Immunogen Catalog Number: AG11288	Calculated MW: 564 aa, 60 kDa	
	Observed MW: 60 kDa	

Applications

Tested Applications:
WB, IHC, IF/ICC, IF-P, ELISA

Species Specificity:
human, mouse, rat

Note-IHC: suggested antigen retrieval with TE buffer pH 9.0; (*) Alternatively, antigen retrieval may be performed with citrate buffer pH 6.0

Positive Controls:

WB : HaCaT cells, A431 cells, human saliva, rat skin tissue, mouse skin tissue

IHC : human cervical cancer tissue, human lung cancer tissue, human oesophagus cancer tissue

IF-P : human cervical cancer tissue,

IF/ICC : HeLa cells,

Background Information

Keratins are a large family of proteins that form the intermediate filament cytoskeleton of epithelial cells, which are classified into two major sequence types. Type I keratins are a group of acidic intermediate filament proteins, including K9-K23, and the hair keratins Ha1-Ha8. Type II keratins are the basic or neutral counterparts to the acidic type I keratins, including K1-K8, and the hair keratins, Hb1-Hb6. This antibody can react with Cytokeratin 5 and Cytokeratin 6.

Storage

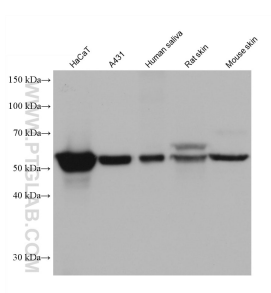
Storage:
Store at -20°C. Stable for one year after shipment.
Storage Buffer:
PBS with 0.02% sodium azide and 50% glycerol pH 7.3.
Aliquoting is unnecessary for -20°C storage

*** 20ul sizes contain 0.1% BSA

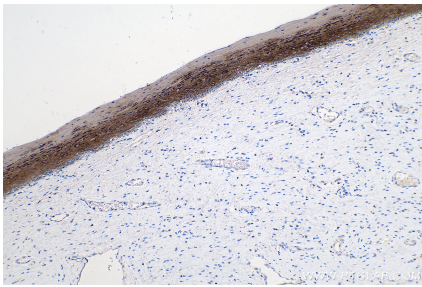
For technical support and original validation data for this product please contact:
T: 1 (888) 4PTGLAB (1-888-478-4522) (toll free in USA), or 1(312) 455-8498 (outside USA)
E: proteintech@ptglab.com
W: ptglab.com

This product is exclusively available under Proteintech Group brand and is not available to purchase from any other manufacturer.

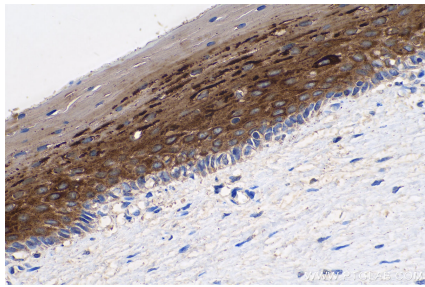
Selected Validation Data



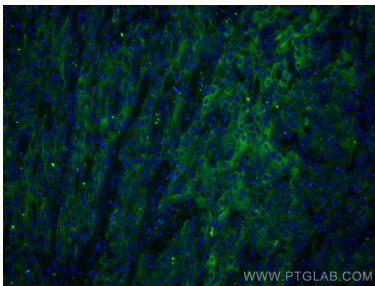
Various lysates were subjected to SDS PAGE followed by western blot with 68295-1-Ig (Cytokeratin 5/6 antibody) at dilution of 1:10000 incubated at room temperature for 1.5 hours.



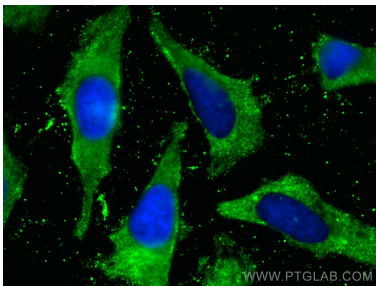
Immunohistochemical analysis of paraffin-embedded human cervical cancer tissue slide using 68295-1-Ig (Cytokeratin 5/6 antibody) at dilution of 1:2300 (under 10x lens). Heat mediated antigen retrieval with Tris-EDTA buffer (pH 9.0).



Immunohistochemical analysis of paraffin-embedded human cervical cancer tissue slide using 68295-1-Ig (Cytokeratin 5/6 antibody) at dilution of 1:2300 (under 40x lens). Heat mediated antigen retrieval with Tris-EDTA buffer (pH 9.0).



Immunofluorescent analysis of (4% PFA) fixed human cervical cancer tissue using Cytokeratin 5/6 antibody (68295-1-Ig, Clone: 1F9E1) at dilution of 1:400 and CoraLite®488-Conjugated AffiniPure Goat Anti-Mouse IgG(H+L).



Immunofluorescent analysis of (-20°C Methanol) fixed HeLa cells using Cytokeratin 5/6 antibody (68295-1-Ig, Clone: 1F9E1) at dilution of 1:800 and CoraLite®488-Conjugated AffiniPure Goat Anti-Mouse IgG(H+L).