

LEPREL2 Monoclonal antibody

Catalog Number: 68299-1-Ig

Basic Information

Catalog Number: 68299-1-Ig	GenBank Accession Number: BC017217	Purification Method: Protein G purification
Size: 150ul , Concentration: 1000 ug/ml by Nanodrop;	GeneID (NCBI): 10536	CloneNo.: 1F6F3
Source: Mouse	UNIPROT ID: Q8IVL6	Recommended Dilutions: WB 1:5000-1:50000 IHC 1:50-1:500
Isotype: IgG1	Full Name: leprecan-like 2	
Immunogen Catalog Number: AG8850	Calculated MW: 736 aa, 82 kDa	
	Observed MW: 82 kDa	

Applications

Tested Applications: WB, IHC, ELISA	Positive Controls:
Species Specificity: Human, Rat, Mouse	WB : rat testis tissue, HeLa cells
	IHC : mouse ovary tissue,

Note-IHC: suggested antigen retrieval with **TE buffer pH 9.0; (*)** Alternatively, antigen retrieval may be performed with **citrate buffer pH 6.0**

Background Information

P3H3 (prolyl 3-hydroxylase 3, also known as LEPREL2) is a member of the leprecan family of proteins, which also include P3H1, P3H2, CRTAP and SC56. Collagen prolyl hydroxylases are required for proper collagen biosynthesis, folding, and assembly. P3H3 is thought to reside in the endoplasmic reticulum and has prolyl 3-hydroxylase activity catalyzing the post-translational formation of 3-hydroxyproline in -Xaa-Pro-Gly-sequences in collagens, especially types IV and V.

Storage

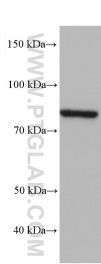
Storage:
Store at -20°C. Stable for one year after shipment.
Storage Buffer:
PBS with 0.02% sodium azide and 50% glycerol pH 7.3.
Aliquoting is unnecessary for -20°C storage

***** 20ul sizes contain 0.1% BSA**

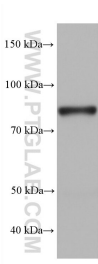
For technical support and original validation data for this product please contact:
T: 1 (888) 4PTGLAB (1-888-478-4522) (toll free in USA), or 1(312) 455-8498 (outside USA)
E: proteintech@ptglab.com
W: ptglab.com

This product is exclusively available under Proteintech Group brand and is not available to purchase from any other manufacturer.

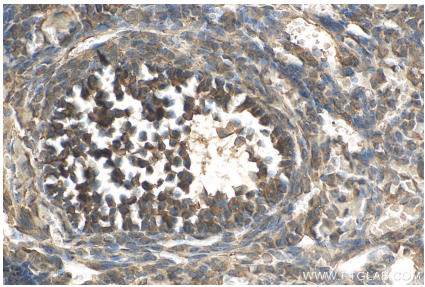
Selected Validation Data



HeLa cells were subjected to SDS PAGE followed by western blot with 68299-1-Ig (LEPREL2 antibody) at dilution of 1:10000 incubated at room temperature for 1.5 hours.



rat testis tissue were subjected to SDS PAGE followed by western blot with 68299-1-Ig (LEPREL2 antibody) at dilution of 1:10000 incubated at room temperature for 1.5 hours.



Immunohistochemical analysis of paraffin-embedded mouse ovary tissue slide using 68299-1-Ig (LEPREL2 antibody) at dilution of 1:200 (under 40x lens). Heat mediated antigen retrieval with Tris-EDTA buffer (pH 9.0).