

For Research Use Only

DLAT Monoclonal antibody

Catalog Number: 68303-1-Ig

Featured Product

6 Publications



Basic Information

Catalog Number:

68303-1-Ig

Size:

150ul, Concentration: 500 ug/ml by Nanodrop;

Source:

Mouse

Isotype:

IgG2b

Immunogen Catalog Number:

AG4226

GenBank Accession Number:

BC039084

GeneID (NCBI):

1737

UNIPROT ID:

P10515

Full Name:

dihydrolipoamide S-acetyltransferase

Calculated MW:

647 aa, 70 kDa

Observed MW:

69-70 kDa

Purification Method:

Protein A purification

CloneNo.:

1F2B9

Recommended Dilutions:

WB 1:5000-1:50000

IHC 1:500-1:2000

IF/ICC 1:400-1:1600

Applications

Tested Applications:

WB, IHC, IF/ICC, ELISA

Cited Applications:

WB, IHC, IF, ColP

Species Specificity:

human, mouse, rat

Cited Species:

human, mouse

Note-IHC: suggested antigen retrieval with TE buffer pH 9.0; (*) Alternatively, antigen retrieval may be performed with citrate buffer pH 6.0

Positive Controls:

WB : HCT 116 cells, HAP1 cells, LNCaP cells, HeLa cells, HepG2 cells, Jurkat cells, K-562 cells, rat brain tissue, mouse brain tissue

IHC : human liver cancer tissue, mouse kidney tissue

IF/ICC : HepG2 cells,

Notable Publications

Author	Pubmed ID	Journal	Application
Zhihua Wang	39920081	ACS Nano	WB
Qiang Ma	39676407	Small	WB
Li Chen	39528670	Sci Rep	WB,IHC

Storage

Storage:

Store at -20°C. Stable for one year after shipment.

Storage Buffer:

PBS with 0.02% sodium azide and 50% glycerol, pH7.3

Aliquoting is unnecessary for -20°C storage

*** 20ul sizes contain 0.1% BSA

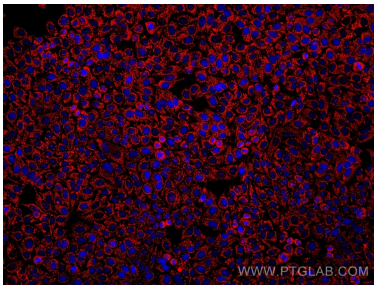
For technical support and original validation data for this product please contact:

T: 1 (888) 4PTGLAB (1-888-478-4522) (toll free in USA), or 1(312) 455-8498 (outside USA)

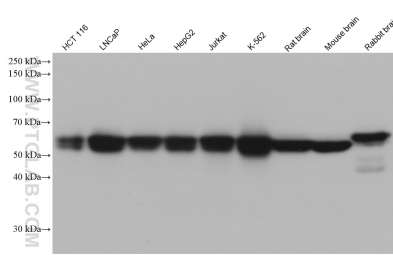
E: proteintech@ptglab.com
W: ptglab.com

This product is exclusively available under Proteintech Group brand and is not available to purchase from any other manufacturer.

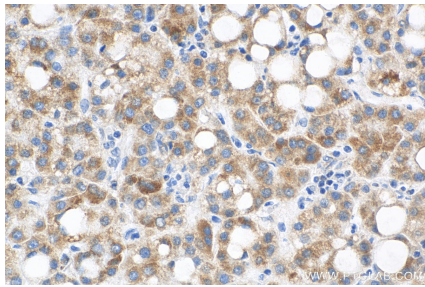
Selected Validation Data



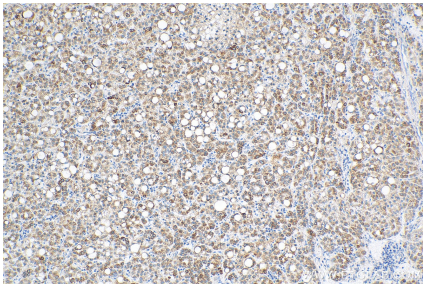
Immunofluorescent analysis of (4% PFA) fixed HepG2 cells using DLAT antibody (68303-1-Ig, Clone: 1F2B9) at dilution of 1:500 and Multi-rAb CoraLite® Plus 594-Goat Anti-Mouse Recombinant Secondary Antibody (H+L) (Cat.NO. RGAM004).



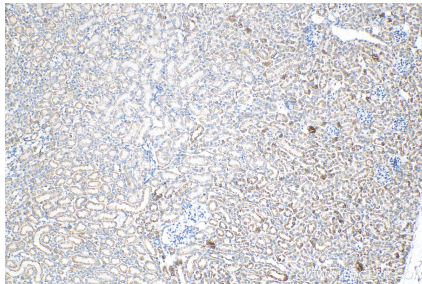
Various lysates were subjected to SDS PAGE followed by western blot with 68303-1-Ig (DLAT antibody) at dilution of 1:20000 incubated at room temperature for 1.5 hours.



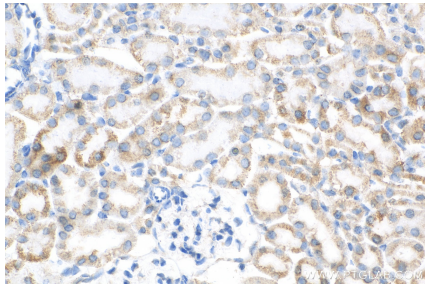
Immunohistochemical analysis of paraffin-embedded human liver cancer tissue slide using 68303-1-Ig (DLAT antibody) at dilution of 1:1000 (under 40x lens). Heat mediated antigen retrieval with Tris-EDTA buffer (pH 9.0).



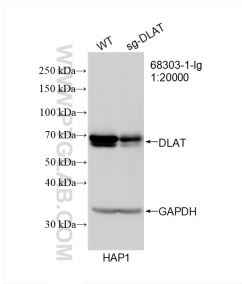
Immunohistochemical analysis of paraffin-embedded human liver cancer tissue slide using 68303-1-Ig (DLAT antibody) at dilution of 1:1000 (under 10x lens). Heat mediated antigen retrieval with Tris-EDTA buffer (pH 9.0).



Immunohistochemical analysis of paraffin-embedded mouse kidney tissue slide using 68303-1-Ig (DLAT antibody) at dilution of 1:1000 (under 10x lens). Heat mediated antigen retrieval with Tris-EDTA buffer (pH 9.0).



Immunohistochemical analysis of paraffin-embedded mouse kidney tissue slide using 68303-1-Ig (DLAT antibody) at dilution of 1:1000 (under 40x lens). Heat mediated antigen retrieval with Tris-EDTA buffer (pH 9.0).



WB result of DLAT antibody (68303-1-Ig; 1:20000; room temperature for 1.5 hours) with wild-type and sg-DLAT transfected HAP1 cells.



Immunofluorescent analysis of (4% PFA) fixed HepG2 cells using DLAT antibody (68303-1-Ig, Clone: 1F2B9) at dilution of 1:800 and CoraLite® 488-Conjugated AffiniPure Goat Anti-Mouse IgG(H+L), CL594-Phalloidin (red).