

For Research Use Only

EXOSC10 Monoclonal antibody

Catalog Number: 68315-1-Ig



Basic Information

Catalog Number: 68315-1-Ig	GenBank Accession Number: BC039901	Purification Method: Protein G purification
Size: 150ul , Concentration: 1000 ug/ml by Nanodrop;	GeneID (NCBI): 5394	CloneNo.: 1D6G9
Source: Mouse	UNIPROT ID: Q01780	Recommended Dilutions: WB 1:5000-1:50000
Isotype: IgG1	Full Name: exosome component 10	IP 0.5-4.0 ug for 1.0-3.0 mg of total protein lysate
Immunogen Catalog Number: AG28587	Calculated MW: 98 kDa	IF/ICC 1:500-1:2000
	Observed MW: 98 kDa	

Applications

Tested Applications: WB, IF/ICC, IP, ELISA	Positive Controls:
Species Specificity: Human	WB : LNCaP cells, HeLa cells, HepG2 cells, Jurkat cells, K-562 cells, HSC-T6 cells
	IP : HeLa cells,
	IF/ICC : HeLa cells,

Background Information

About 50% of patients with polymyositis/scleroderma (PM-Scl) overlap syndrome are reported to have autoantibodies to a nuclear/nucleolar particle termed PM-Scl. Exosome component 10 (EXOSC10), also named autoantigen PM/Scl 2, is the 100 kDa antigen component of PM-Scl and is recognized by most sera of PM-Scl patients. EXOSC10 is strongly enriched in the nucleolus and a small amount has been found in cytoplasm supporting the existence of a nucleolar RNA exosome complex form. As a putative catalytic component of the RNA exosome complex which has 3'->5' exoribonuclease activity, EXOSC10 participates in a multitude of cellular RNA processing and degradation events.

Storage

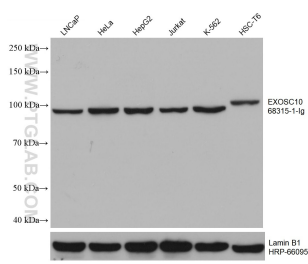
Storage:
Store at -20°C. Stable for one year after shipment.
Storage Buffer:
PBS with 0.02% sodium azide and 50% glycerol pH 7.3.
Aliquoting is unnecessary for -20°C storage

*** 20ul sizes contain 0.1% BSA

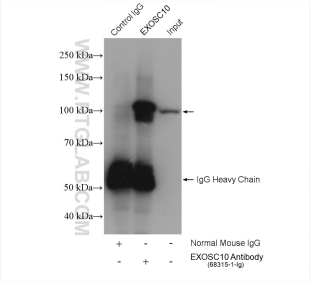
For technical support and original validation data for this product please contact:
T: 1 (888) 4PTGLAB (1-888-478-4522) (toll free in USA), or 1(312) 455-8498 (outside USA)
E: proteintech@ptglab.com
W: ptglab.com

This product is exclusively available under Proteintech Group brand and is not available to purchase from any other manufacturer.

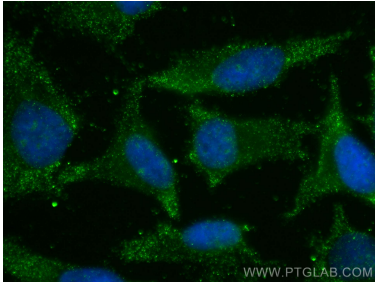
Selected Validation Data



Various lysates were subjected to SDS PAGE followed by western blot with 68315-1-Ig (EXOSC10 antibody) at dilution of 1:10000 incubated at room temperature for 1.5 hours. The membrane was stripped and reblotted with HRP-conjugated Lamin B1 Monoclonal antibody (HRP-66095) as loading control.



IP result of anti-EXOSC10 (IP:68315-1-Ig, 4ug; Detection:68315-1-Ig 1:1000) with HeLa cells lysate 1720 ug.



Immunofluorescent analysis of (-20°C Ethanol) fixed HeLa cells using EXOSC10 antibody (68315-1-Ig, Clone: 1D6G9) at dilution of 1:1000 and CoraLite®488-Conjugated Goat Anti-Mouse IgG(H+L).