

For Research Use Only

PBLD Monoclonal antibody

Catalog Number: 68317-1-Ig **1 Publications**



Basic Information

Catalog Number:	68317-1-Ig	GenBank Accession Number:	BC009738	Purification Method:	Protein G purification
Size:	150ul , Concentration: 1000 ug/ml by Nanodrop;	GeneID (NCBI):	64081	CloneNo.:	1G11D4
Source:	Mouse	UNIPROT ID:	P30039	Recommended Dilutions:	WB 1:2000-1:10000 IF/ICC 1:200-1:800
Isotype:	IgG1	Full Name:	phenazine biosynthesis-like protein domain containing		
Immunogen Catalog Number:	AG23827	Observed MW:	30 kDa		

Applications

Tested Applications:	WB, IF/ICC, ELISA	Positive Controls:	
Cited Applications:	WB	WB :	pig liver tissue, pig kidney tissue
Species Specificity:	Human, pig	IF/ICC :	HEK-293 cells,
Cited Species:	human		

Background Information

PBLD, also termed as MAWBP, was first identified from a human liver cDNA library using a yeast two-hybrid technique by Iriyama et al. As the only representative of phenazine biosynthesis-like protein family, PBLD is widely expressed in human tissues, such as brain, heart, lung, liver, pancreas, kidney, and placenta. Its expression is elevated in several diseases processes, including insulin resistance, folate deficiency, and hypotension. PBLD has been proved to be involved in gastric carcinogenesis, PBLD expression was attenuated in gastric cancer (GC) tissues, and negatively regulated the growth and invasion in gastric cancer cell-lines by inhibiting TGF- β 1-induced EMT (Epithelial-Mesenchymal Transition).(PMID: 11355021, 17929853, 23687415, 26594798)

Notable Publications

Author	Pubmed ID	Journal	Application
Yonger Chen	39272040	Mol Cancer	WB

Storage

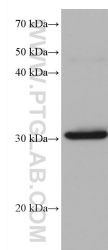
Storage:
Store at -20°C. Stable for one year after shipment.
Storage Buffer:
PBS with 0.02% sodium azide and 50% glycerol pH 7.3.
Aliquoting is unnecessary for -20°C storage

*** 20ul sizes contain 0.1% BSA

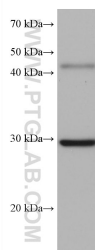
For technical support and original validation data for this product please contact:
T: 1 (888) 4PTGLAB (1-888-478-4522) (toll free in USA), or 1(312) 455-8498 (outside USA)
E: proteintech@ptglab.com
W: ptglab.com

This product is exclusively available under Proteintech Group brand and is not available to purchase from any other manufacturer.

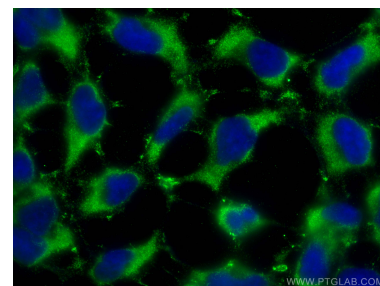
Selected Validation Data



pig liver tissue were subjected to SDS PAGE followed by western blot with 68317-1-Ig (PBLD antibody) at dilution of 1:5000 incubated at room temperature for 1.5 hours.



pig kidney tissue were subjected to SDS PAGE followed by western blot with 68317-1-Ig (PBLD antibody) at dilution of 1:5000 incubated at room temperature for 1.5 hours.



Immunofluorescent analysis of (-20°C Ethanol) fixed HEK-293 cells using PBLD antibody (68317-1-Ig, Clone: 1G11D4) at dilution of 1:400 and CoraLite®488-Conjugated Goat Anti-Mouse IgG(H+L).