

For Research Use Only

# LRRC8C Monoclonal antibody

Catalog Number: 68323-1-Ig



## Basic Information

<b>Catalog Number:</b> 68323-1-Ig	<b>GenBank Accession Number:</b> BC113973	<b>Purification Method:</b> Protein A purification
<b>Size:</b> 150ul , Concentration: 1000 ug/ml by Nanodrop;	<b>GeneID (NCBI):</b> 84230	<b>CloneNo.:</b> 4A6A4
<b>Source:</b> Mouse	<b>UNIPROT ID:</b> Q8TDW0	<b>Recommended Dilutions:</b> WB 1:2000-1:10000 IF/ICC 1:200-1:800
<b>Isotype:</b> IgG2b	<b>Full Name:</b> leucine rich repeat containing 8 family, member C	
<b>Immunogen Catalog Number:</b> AG17001	<b>Calculated MW:</b> 803 aa, 92 kDa	
	<b>Observed MW:</b> 105 kDa	

## Applications

<b>Tested Applications:</b> WB, IF/ICC, ELISA	<b>Positive Controls:</b>
<b>Species Specificity:</b> Human	<b>WB :</b> HeLa cells, U2OS cells, HEK-239 cells <b>IF/ICC :</b> HepG2 cells,

## Background Information

LRRC8C (Leucine-rich repeat-containing protein 8C), also known as AD158, is a non-essential component of the volume-regulated anion channel (VRAC, also known as VSOAC channel), which is required to maintain a constant cell volume in response to extracellular or intracellular permeability changes. The VRAC channel conducts iodide better than chloride and can also conduct organic osmolytes like taurine. The VRAC channel also mediates transport of immunoreactive cyclic dinucleotide GMP-AMP (2'-3'-cGAMP), an immune messenger produced in response to DNA virus in the cytosol (PMID:24790029; 26824658; 28193731).

## Storage

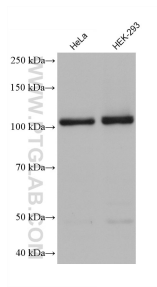
**Storage:**  
Store at -20°C. Stable for one year after shipment.  
**Storage Buffer:**  
PBS with 0.02% sodium azide and 50% glycerol pH 7.3.  
Aliquoting is unnecessary for -20°C storage

\*\*\* 20ul sizes contain 0.1% BSA

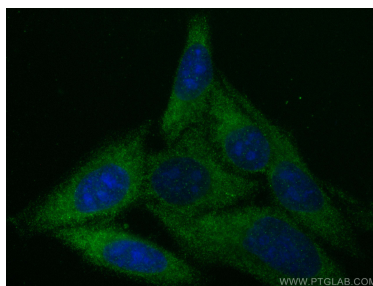
For technical support and original validation data for this product please contact:  
T: 1 (888) 4PTGLAB (1-888-478-4522) (toll free in USA), or 1(312) 455-8498 (outside USA)  
E: [proteintech@ptglab.com](mailto:proteintech@ptglab.com)  
W: [ptglab.com](http://ptglab.com)

This product is exclusively available under Proteintech Group brand and is not available to purchase from any other manufacturer.

## Selected Validation Data



Various lysates were subjected to SDS PAGE followed by western blot with 68323-1-Ig (LRRC8C antibody) at dilution of 1:5000 incubated at room temperature for 1.5 hours.



Immunofluorescent analysis of (-20°C Ethanol) fixed HepG2 cells using LRRC8C antibody (68323-1-Ig, Clone: 4A6A4 ) at dilution of 1:400 and CoraLite®488-Conjugated Goat Anti-Mouse IgG(H+L) (SA00013-1).