

For Research Use Only

EPS8L2 Monoclonal antibody

Catalog Number: 68330-1-Ig

Featured Product



Basic Information

Catalog Number:

68330-1-Ig

Size:

150ul , Concentration: 1000 ug/ml by Nanodrop;

Source:

Mouse

Isotype:

IgG1

Immunogen Catalog Number:

AG16808

GenBank Accession Number:

BC002474

GeneID (NCBI):

64787

UNIPROT ID:

Q9H6S3

Full Name:

EPS8-like 2

Calculated MW:

715 aa, 81 kDa

Observed MW:

81-85 kDa

Purification Method:

Protein A purification

CloneNo.:

2E3B1

Recommended Dilutions:

WB 1:5000-1:50000

IF/ICC 1:250-1:1000

Applications

Tested Applications:

WB, IF/ICC, ELISA

Species Specificity:

Human, Mouse, Rat

Positive Controls:

WB : rat skin tissue, A431 cells, HepG2 cells, A549 cells LNCaP cells HeLa cells HepG2 cells, mouse skin tissue

IF/ICC : HeLa cells,

Background Information

EPS8L2 (epidermal growth factor receptor pathway substrate 8 L2), a member of the Eps8-like protein family, is a newly identified hair bundle protein that is localized at the tips of stereocilia of both cochlear and vestibular hair cells.

Storage

Storage:

Store at -20°C. Stable for one year after shipment.

Storage Buffer:

PBS with 0.02% sodium azide and 50% glycerol pH 7.3.

Aliquoting is unnecessary for -20°C storage

*** 20ul sizes contain 0.1% BSA

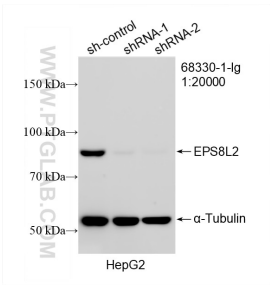
For technical support and original validation data for this product please contact:

T: 1 (888) 4PTGLAB (1-888-478-4522) (toll free in USA), or 1(312) 455-8498 (outside USA)

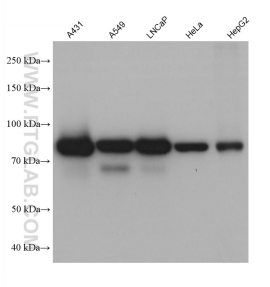
E: proteintech@ptglab.com
W: ptglab.com

This product is exclusively available under Proteintech Group brand and is not available to purchase from any other manufacturer.

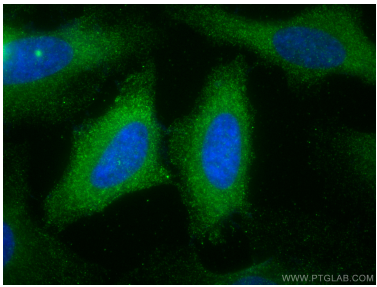
Selected Validation Data



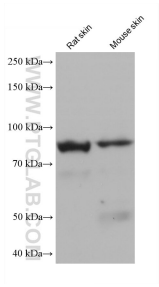
WB result of EPS8L2 antibody (68330-1-Ig; 1:20000; incubated at room temperature for 1.5 hours) with sh-Control and sh-EPS8L2 transfected HepG2 cells.



A431 cells were subjected to SDS PAGE followed by western blot with 68330-1-Ig (EPS8L2 antibody) at dilution of 1:10000 incubated at room temperature for 1.5 hours.



Immunofluorescent analysis of (-20°C Methanol) fixed HeLa cells using EPS8L2 antibody (68330-1-Ig, Clone: 2E3B1) at dilution of 1:500 and CoraLite®488-Conjugated Goat Anti-Mouse IgG(H+L).



rat skin tissue were subjected to SDS PAGE followed by western blot with 68330-1-Ig (EPS8L2 antibody) at dilution of 1:10000 incubated at room temperature for 1.5 hours.