

For Research Use Only

AP2B1 Monoclonal antibody

Catalog Number: 68349-1-Ig



Basic Information

Catalog Number: 68349-1-Ig	GenBank Accession Number: BC006201	Purification Method: Protein A purification
Size: 150ul , Concentration: 500 ug/ml by Nanodrop;	GeneID (NCBI): 163	CloneNo.: 1A3B6
Source: Mouse	UNIPROT ID: P63010	Recommended Dilutions: WB 1:5000-1:50000 IHC 1:500-1:2000 IF/ICC 1:1000-1:4000
Isotype: IgG2a	Full Name: adaptor-related protein complex 2, beta 1 subunit	
Immunogen Catalog Number: AG8264	Calculated MW: 105 kDa	
	Observed MW: 100-115 kDa	

Applications

Tested Applications: WB, IHC, IF/ICC, ELISA	Positive Controls:
Species Specificity: Human, Mouse, Rat, Rabbit, Pig	WB : pig cerebellum tissue, HeLa cells, rabbit cerebellum tissue, rat cerebellum tissue, mouse cerebellum tissue
Note-IHC: suggested antigen retrieval with TE buffer pH 9.0; (*) Alternatively, antigen retrieval may be performed with citrate buffer pH 6.0	IHC : rat brain tissue,
	IF/ICC : HeLa cells,

Background Information

AP2B1 is a component of the adaptor protein complex 2 (AP-2). AP complexes are cytosolic heterotetramers that mediate the sorting of membrane proteins in the secretory and endocytic pathways. AP complexes are involved in the formation of clathrin-coated vesicles (CCVs) by recruiting the scaffold protein, clathrin. AP complexes also play a pivotal role in the cargo selection by recognizing the sorting signals within the cytoplasmic tail of integral membrane proteins. AP-2 works on the plasma membrane to internalize cargo in clathrin-mediated endocytosis.

Storage

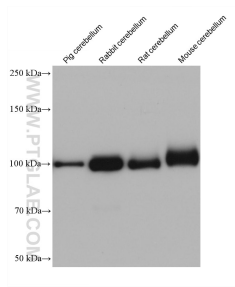
Storage:
Store at -20°C. Stable for one year after shipment.
Storage Buffer:
PBS with 0.02% sodium azide and 50% glycerol pH 7.3.
Aliquoting is unnecessary for -20°C storage

*** 20ul sizes contain 0.1% BSA

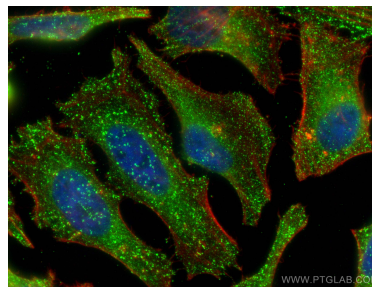
For technical support and original validation data for this product please contact:
T: 1 (888) 4PTGLAB (1-888-478-4522) (toll free in USA), or 1(312) 455-8498 (outside USA)
E: proteintech@ptglab.com
W: ptglab.com

This product is exclusively available under Proteintech Group brand and is not available to purchase from any other manufacturer.

Selected Validation Data



Various lysates were subjected to SDS PAGE followed by western blot with 68349-1-Ig (AP2B1 antibody) at dilution of 1:10000 incubated at room temperature for 1.5 hours.



Immunofluorescent analysis of (4% PFA) fixed HeLa cells using AP2B1 antibody (68349-1-Ig, Clone: 1A3B6) at dilution of 1:2000 and CoraLite®488-Conjugated Goat Anti-Mouse IgG(H+L).