

For Research Use Only

CCDC50 Monoclonal antibody

Catalog Number: 68369-1-Ig **1 Publications**



Basic Information

Catalog Number: 68369-1-Ig	GenBank Accession Number: BC065004	Purification Method: Protein G purification
Size: 150ul , Concentration: 500 ug/ml by Nanodrop;	GeneID (NCBI): 152137	CloneNo.: 2F12G7
Source: Mouse	UNIPROT ID: Q8IVM0	Recommended Dilutions: WB: 1:20000-1:100000
Isotype: IgG1	Full Name: coiled-coil domain containing 50	FC (Intra): 0.40 ug per 10 ⁶ cells in a 100 µl suspension
Immunogen Catalog Number: AG15889	Calculated MW: 482 aa, 56 kDa	
	Observed MW: 36-38 kDa	

Applications

Tested Applications: WB, FC (Intra), ELISA	Positive Controls:
Cited Applications: WB	WB : A549 cells, HeLa cells, HEK-293 cells, HepG2 cells, K-562 cells, HSC-T6 cells, NIH/3T3 cells, 4T1 cells
Species Specificity: human	FC (Intra) : A549 cells,
Cited Species: human	

Background Information

CCDC50 encodes Ymer, an effector of epidermal growth factor (EGF)-mediated cell signaling that is ubiquitously expressed in different organs and has been suggested to inhibit down-regulation of the EGF receptor. CCDC50 act as a multifunctional regulator in NF-κB and Fas signaling pathways. In chronic lymphocytic leukaemia (CLL) and mantle cell lymphoma (MCL), CCDC50 is required for the survival of MCL and CLL cancer cells. Recently, CCDC50 was shown to promote hepatocellular carcinoma through the Ras/Foxo4 signaling pathway. (PMID: 34453126, PMID: 32612200, PMID: 17503326)

Notable Publications

Author	Pubmed ID	Journal	Application
Guoxiu Li	39285245	EMBO Rep	WB

Storage

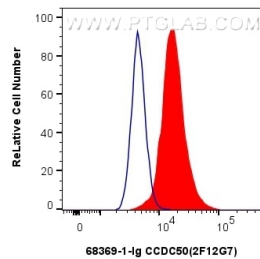
Storage:
Store at -20°C. Stable for one year after shipment.
Storage Buffer:
PBS with 0.02% sodium azide and 50% glycerol, pH7.3
Aliquoting is unnecessary for -20°C storage

*** 20ul sizes contain 0.1% BSA

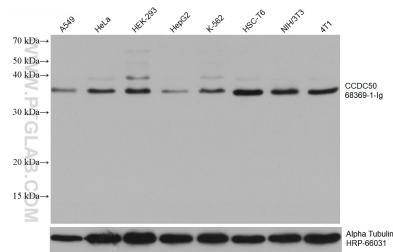
For technical support and original validation data for this product please contact:
T: 1 (888) 4PTGLAB (1-888-478-4522) (toll free in USA), or 1(312) 455-8498 (outside USA)
E: proteintech@ptglab.com
W: ptglab.com

This product is exclusively available under Proteintech Group brand and is not available to purchase from any other manufacturer.

Selected Validation Data



1x10⁶ A549 cells were intracellularly stained with 0.4 ug CCDC50 Monoclonal antibody (68369-1-Ig, Clone:2F12G7) and CoraLite®488-Conjugated Goat Anti-Mouse IgG(H+L) (SA00013-1)(red), or 0.4 ug Mouse IgG1 isotype control Mouse McAb (66360-1-Ig, Clone: 1F8D3) (blue). Cells were fixed with 4% PFA and permeabilized with Flow Cytometry Perm Buffer (PF00011-C).



Various lysates were subjected to SDS PAGE followed by western blot with 68369-1-Ig (CCDC50 antibody) at dilution of 1:50000 incubated at room temperature for 1.5 hours. The membrane was stripped and reblotted with HRP-conjugated Alpha Tubulin Monoclonal antibody (HRP-66031) as loading control.