

For Research Use Only

# Phospho-S6 Ribosomal protein (Ser240/244) Recombinant antibody

Catalog Number: 81184-1-RR



## Basic Information

Catalog Number:

81184-1-RR

Size:

100ul, Concentration: 400 ug/ml by Nanodrop;

Source:

Rabbit

Isotype:

IgG

GenBank Accession Number:

NM\_001010

GeneID (NCBI):

6194

UNIPROT ID:

P62753

Full Name:

ribosomal protein S6

Observed MW:

32 kDa

Purification Method:

Protein A purification

CloneNo.:

5J13

Recommended Dilutions:

WB 1:5000-1:50000

IF/ICC 1:250-1:1000

## Applications

Tested Applications:

WB, IF/ICC, FC (Intra), ELISA

Species Specificity:

human

Positive Controls:

WB : Calyculin A treated HEK-293 cells,

IF/ICC : Calyculin A treated HeLa cells,

FC (Intra) : Calyculin A treated HEK-293 cells,

## Background Information

Ribosomal protein S6 (RPS6), also named Phosphoprotein NP33, may play an important role in controlling cell growth and proliferation through the selective translation of particular classes of mRNA. Ribosomal protein S6 is the major substrate of protein kinases in eukaryote ribosomes. The phosphorylation is stimulated by growth factors, tumor promoting agents, and mitogens and is dephosphorylated at growth arrest.

## Storage

Storage:

Store at -20°C. Stable for one year after shipment.

Storage Buffer:

PBS with 0.02% sodium azide and 50% glycerol, pH7.3

Aliquoting is unnecessary for -20°C storage

\*\*\* 20ul sizes contain 0.1% BSA

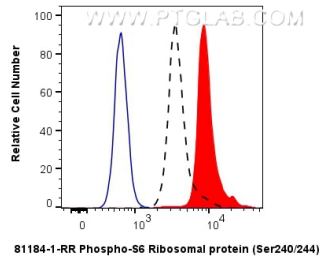
For technical support and original validation data for this product please contact:

T: 1 (888) 4PTGLAB (1-888-478-4522) (toll free in USA), or 1(312) 455-8498 (outside USA)

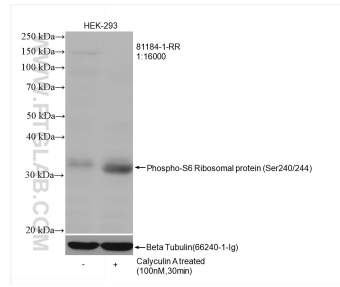
E: [proteintech@ptglab.com](mailto:proteintech@ptglab.com)  
W: [ptglab.com](http://ptglab.com)

This product is exclusively available under Proteintech Group brand and is not available to purchase from any other manufacturer.

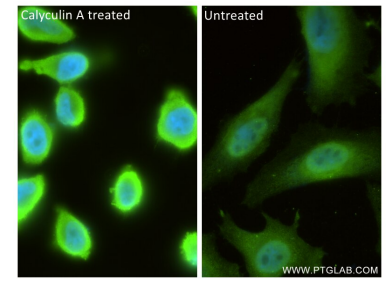
## Selected Validation Data



1X10<sup>6</sup> HEK-293 cells untreated (dashed lines) or treated with Calyculin A which intracellularly stained with 0.06 ug Phospho-S6 Ribosomal protein (Ser240/244) Recombinant antibody (81184-1-RR, Clone:5J13) and CoraLite®488-Conjugated Goat Anti-Rabbit IgG(H+L) (SA00013-2)(red), or 0.06 ug Control Antibody (blue). Cells were fixed with 4% PFA and permeabilized with 90% MeOH.



Non-treated and Calyculin A treated HEK-293 cells were subjected to SDS PAGE followed by western blot with 81184-1-RR (Phospho-S6 Ribosomal protein (Ser240/244) antibody) at dilution of 1:16000 incubated at room temperature for 1.5 hours. The membrane was stripped and re-blotted with GAPDH antibody as the loading control.



Immunofluorescent analysis of (4% PFA) fixed Calyculin A treated HeLa cells using Phospho-S6 Ribosomal protein (Ser240/244) antibody (81184-1-RR, Clone: 5J13 ) at dilution of 1:500 and CoraLite®488-Conjugated Goat Anti-Rabbit IgG(H+L) (SA00013-2).