

For Research Use Only

EEF1A1 Recombinant antibody

Catalog Number: 81377-1-RR

Featured Product



Basic Information

Catalog Number:

81377-1-RR

Size:

100ul, Concentration: 250 ug/ml by Nanodrop;

Source:

Rabbit

Isotype:

IgG

Immunogen Catalog Number:

AG1938

GenBank Accession Number:

BC014224

GeneID (NCBI):

1915

UNIPROT ID:

P68104

Full Name:

eukaryotic translation elongation factor 1 alpha 1

Calculated MW:

462 aa, 50 kDa

Observed MW:

50 kDa

Purification Method:

Protein A purification

CloneNo.:

2B16

Recommended Dilutions:

WB 1:5000-1:50000

IP 0.5-4.0 ug for 1.0-3.0 mg of total protein lysate

IHC 1:250-1:1000

IF/ICC 1:200-1:800

Applications

Tested Applications:

WB, IHC, IF/ICC, IP, ELISA

Species Specificity:

human, mouse, rat

Note-IHC: suggested antigen retrieval with TE buffer pH 9.0; (*) Alternatively, antigen retrieval may be performed with citrate buffer pH 6.0

Positive Controls:

WB: HEK-293 cells, HepG2 cells, HeLa cells, Jurkat cells, K-562 cells, NIH/3T3 cells, HSC-T6 cells

IP: HeLa cells,

IHC: mouse brain tissue, human pancreas cancer tissue, human colon tissue

IF/ICC: HepG2 cells,

Background Information

EEF1A1, also named as EEF1A, EF1A and LENG7, belongs to the GTP-binding elongation factor family. This protein promotes the GTP-dependent binding of aminoacyl-tRNA to the A-site of ribosomes during protein biosynthesis. It is a typical housekeeping gene product required for the maintenance of cell proliferation and/or survival. In addition, EEF1A1 protects the aminoester bond against hydrolysis until a correct match between the codon on mRNA and the anti-codon on tRNA can be achieved.

Storage

Storage:

Store at -20°C. Stable for one year after shipment.

Storage Buffer:

PBS with 0.02% sodium azide and 50% glycerol pH 7.3.

Aliquoting is unnecessary for -20°C storage

*** 20ul sizes contain 0.1% BSA

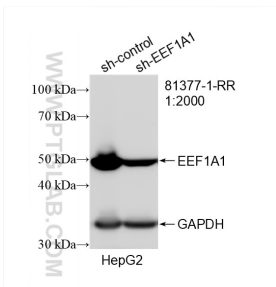
For technical support and original validation data for this product please contact:

T: 1 (888) 4PTGLAB (1-888-478-4522) (toll free in USA), or 1(312) 455-8498 (outside USA)

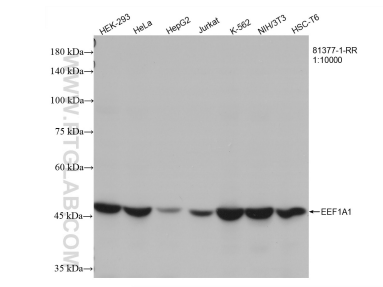
E: proteintech@ptglab.com
W: ptglab.com

This product is exclusively available under Proteintech Group brand and is not available to purchase from any other manufacturer.

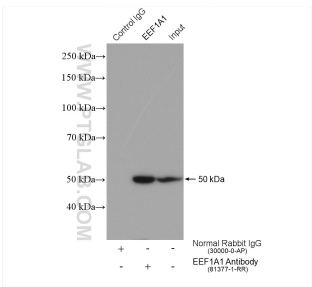
Selected Validation Data



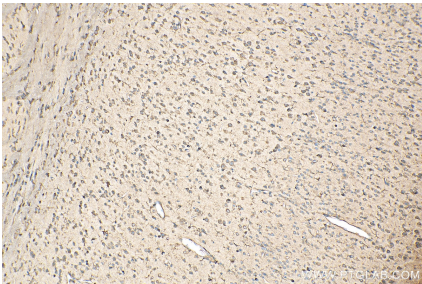
WB result of EEF1A1 antibody (81377-1-RR; 1:2000; incubated at room temperature for 1.5 hours) with sh-Control and sh-EEF1A1 transfected HepG2 cells.



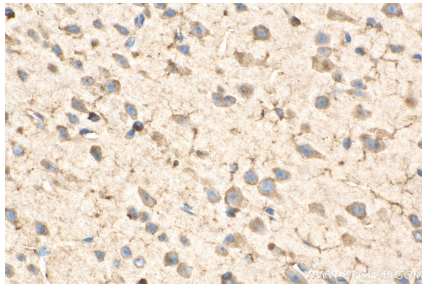
Various lysates were subjected to SDS PAGE followed by western blot with 81377-1-RR (EEF1A1 antibody) at dilution of 1:12000 incubated at room temperature for 1.5 hours.



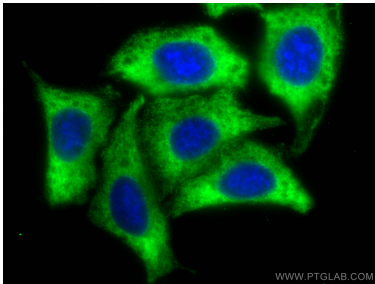
IP result of anti-EEF1A1 (IP:81377-1-RR, 4ug; Detection:81377-1-RR 1:8000) with HeLa cells lysate 1720 ug.



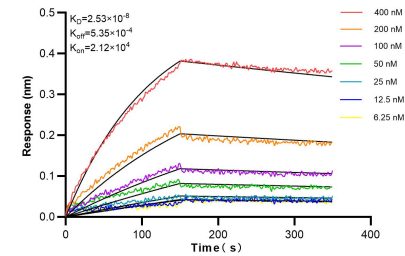
Immunohistochemical analysis of paraffin-embedded mouse brain tissue slide using 81377-1-RR (EEF1A1 antibody) at dilution of 1:500 (under 10x lens). Heat mediated antigen retrieval with Tris-EDTA buffer (pH 9.0).



Immunohistochemical analysis of paraffin-embedded mouse brain tissue slide using 81377-1-RR (EEF1A1 antibody) at dilution of 1:500 (under 40x lens). Heat mediated antigen retrieval with Tris-EDTA buffer (pH 9.0).



Immunofluorescent analysis of (-20°C Methanol) fixed HepG2 cells using EEF1A1 antibody (81377-1-RR, Clone: 2B16) at dilution of 1:400 and CoraLite®488-Conjugated AffiniPure Goat Anti-Rabbit IgG(H+L).



Biolayer interferometry (BLI) kinetic assays of 81377-1-RR against Human EEF1A1 were performed. The affinity constant is 25.3 nM.