

For Research Use Only

# Phospho-RPS6KA1 (Thr359/Ser363) Recombinant antibody

Catalog Number: 81475-1-RR



## Basic Information

<b>Catalog Number:</b> 81475-1-RR	<b>GenBank Accession Number:</b> BC014966	<b>Purification Method:</b> Protein A purification
<b>Size:</b> 100ul , Concentration: 500 ug/ml by Nanodrop;	<b>GeneID (NCBI):</b> 6195	<b>CloneNo.:</b> 3010
<b>Source:</b> Rabbit	<b>UNIPROT ID:</b> Q15418	<b>Recommended Dilutions:</b> WB: 1:5000-1:50000
<b>Isotype:</b> IgG	<b>Full Name:</b> ribosomal protein S6 kinase, 90kDa, polypeptide 1	<b>FC (Intra):</b> 0.06 ug per 10 <sup>6</sup> cells in a 100 µl suspension
	<b>Calculated MW:</b> 735 aa, 83 kDa	
	<b>Observed MW:</b> 83-90 kDa	

## Applications

<b>Tested Applications:</b> WB, FC (Intra), ELISA	<b>Positive Controls:</b>
<b>Species Specificity:</b> human, mouse	<b>WB :</b> HeLa cells, λ phosphatase treated HeLa cells
	<b>FC (Intra) :</b> λ phosphatase treated HeLa cells,

## Background Information

The 90 kDa ribosomal S6 kinases (RSK1-4) are a family of widely expressed serine/threonine kinases and play an important role in the MAPK signaling cascade and act downstream of ERK1/2 signaling. It can mediate mitogenic and stress-induced activation of the transcription factors CREB1, ETV1/ER81 and NR4A1/NUR77. RSK1 (RPS6KA1) is also designated as p90RSK associated with cellular proliferation, survival and differentiation. RPS6KA1 has some phosphorylation sites including Ser380, Thr359 and Ser363 which are important for kinase activation. (PMID: 16458888, 30813401, 17259979, 10679322)

## Storage

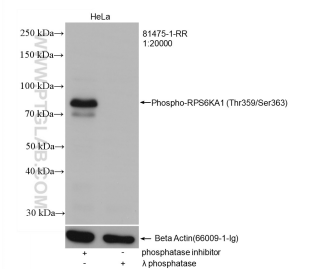
**Storage:**  
Store at -20°C. Stable for one year after shipment.  
**Storage Buffer:**  
PBS with 0.02% sodium azide and 50% glycerol, pH7.3  
Aliquoting is unnecessary for -20°C storage

\*\*\* 20ul sizes contain 0.1% BSA

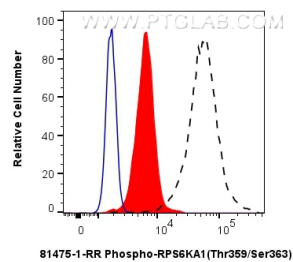
For technical support and original validation data for this product please contact:  
T: 1 (888) 4PTGLAB (1-888-478-4522) (toll free in USA), or 1(312) 455-8498 (outside USA)  
E: proteintech@ptglab.com  
W: ptglab.com

This product is exclusively available under Proteintech Group brand and is not available to purchase from any other manufacturer.

## Selected Validation Data



Non-treated and  $\lambda$  phosphatase treated HeLa cells were subjected to SDS PAGE followed by western blot with 81475-1-RR (Phospho-RPS6KA1 (Thr359/Ser363) antibody) at dilution of 1:20000 incubated at room temperature for 1.5 hours. The membrane was stripped and re-blotted with Beta-Tubulin (66009-1-Ig) as loading control.



1X10<sup>6</sup> HeLa cells untreated (dashed lines) or treated with  $\lambda$  phosphatase which intracellularly stained with 0.06 ug Phospho-RPS6KA1 (Thr359/Ser363) Recombinant antibody (81475-1-RR, Clone:3O10) and CoraLite®488-Conjugated Goat Anti-Rabbit IgG(H+L) (SA00013-2)(red), or 0.06 ug Rabbit IgG Isotype Control Recombinant Antibody (98136-1-RR, Clone: 240953C9) (blue). Cells were fixed with 4% PFA and permeabilized with 90% MeOH.