

For Research Use Only

ENO1 Recombinant antibody

Catalog Number: 81478-1-RR

Featured Product



Basic Information

Catalog Number:

81478-1-RR

Size:

100ul, Concentration: 1000 ug/ml by Nanodrop;

Source:

Rabbit

Isotype:

IgG

Immunogen Catalog Number:

AG1692

GenBank Accession Number:

BC015641

GeneID (NCBI):

2023

ENSEMBL Gene ID:

ENSG00000074800

UNIPROT ID:

P06733

Full Name:

enolase 1, (alpha)

Calculated MW:

47 kDa

Observed MW:

47 kDa

Purification Method:

Protein A purification

CloneNo.:

2C20

Recommended Dilutions:

WB 1:5000-1:50000

IHC 1:1000-1:4000

IF/ICC 1:500-1:2000

Applications

Tested Applications:

WB, IHC, IF/ICC, ELISA

Species Specificity:

human, mouse, rat, pig

Note-IHC: suggested antigen retrieval with TE buffer pH 9.0; (*) Alternatively, antigen retrieval may be performed with citrate buffer pH 6.0

Positive Controls:

WB: HEK-293 cells, mouse brain tissue, pig brain tissue, HeLa cells, HepG2 cells, PC-3 cells, MCF-7 cells, Jurkat cells, rat brain tissue

IHC: mouse brain tissue, human colon cancer tissue

IF/ICC: HepG2 cells,

Background Information

ENO1, also named as NNE, ENO1L1, MBPB1, MPB1 and MBP1, belongs to the enolase family. ENO1 is a metabolic enzyme involved in the synthesis of pyruvate. It also acts as a plasminogen receptor and mediates the activation of plasmin and extracellular matrix degradation. In tumor cells, ENO1 is up-regulated and supports the Warburg effect; it is expressed at the cell surface, where it promotes cancer invasion, and is subjected to a specific array of post-translational modifications, namely acetylation, methylation and phosphorylation. ENO1 overexpression and post-translational modifications could be of diagnostic and prognostic value in many cancer types. (PMID: 27814656). This antibody is specific to ENO1 and has no cross-reaction with ENO2 and ENO3.

Storage

Storage:

Store at -20°C. Stable for one year after shipment.

Storage Buffer:

PBS with 0.02% sodium azide and 50% glycerol pH 7.3.

Aliquoting is unnecessary for -20°C storage

*** 20ul sizes contain 0.1% BSA

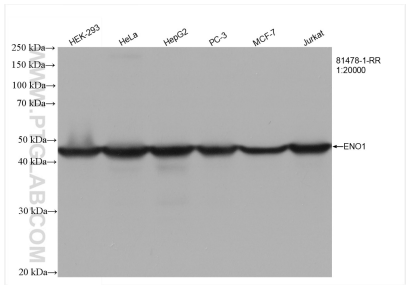
For technical support and original validation data for this product please contact:

T: 1 (888) 4PTGLAB (1-888-478-4522) (toll free in USA), or 1(312) 455-8498 (outside USA)

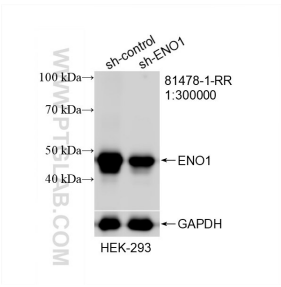
E: proteintech@ptglab.com
W: ptglab.com

This product is exclusively available under Proteintech Group brand and is not available to purchase from any other manufacturer.

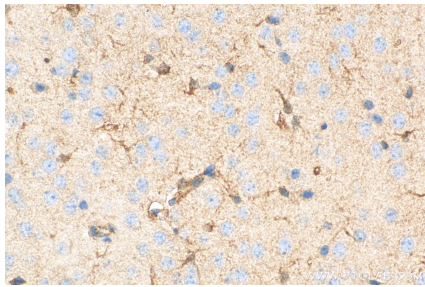
Selected Validation Data



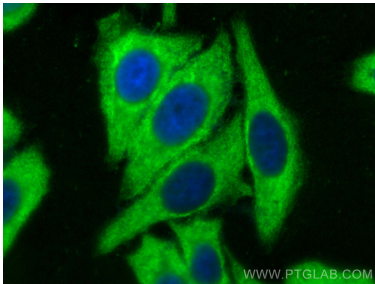
Various lysates were subjected to SDS PAGE followed by western blot with 81478-1-RR (ENO1 antibody) at dilution of 1:20000 incubated at room temperature for 1.5 hours.



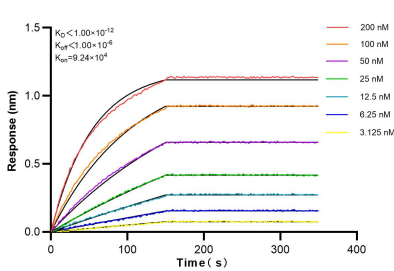
WB result of ENO1 antibody (81478-1-RR; 1:300000; incubated at room temperature for 1.5 hours) with sh-Control and sh-ENO1 transfected HEK-293 cells.



Immunohistochemical analysis of paraffin-embedded mouse brain tissue slide using 81478-1-RR (ENO1 antibody) at dilution of 1:2000 (under 40x lens). Heat mediated antigen retrieval with Tris-EDTA buffer (pH 9.0).



Immunofluorescent analysis of (-20°C Methanol) fixed HepG2 cells using ENO1 antibody (81478-1-RR, Clone: 2C20) at dilution of 1:1000 and CoraLite®488-Conjugated AffiniPure Goat Anti-Rabbit IgG(H+L).



Biolayer interferometry (BLI) kinetic assays of 81478-1-RR against Human ENO1 were performed. The affinity constant is below 1 pM.