

For Research Use Only

ENO1/2/3 Recombinant antibody

Catalog Number: 81504-1-RR

Featured Product



Basic Information

Catalog Number:

81504-1-RR

Size:

100ul, Concentration: 500 ug/ml by Nanodrop;

Source:

Rabbit

Isotype:

IgG

Immunogen Catalog Number:

AG1692

GenBank Accession Number:

BC015641

GeneID (NCBI):

2023

ENSEMBL Gene ID:

ENSG00000074800

UNIPROT ID:

P06733

Full Name:

enolase 1, (alpha)

Calculated MW:

47 kDa

Observed MW:

47 kDa

Purification Method:

Protein A purification

CloneNo.:

6E24

Recommended Dilutions:

WB 1:5000-1:50000

IHC 1:500-1:2000

IF/ICC 1:50-1:500

Applications

Tested Applications:

WB, IHC, IF/ICC, ELISA

Species Specificity:

human, mouse, rat, pig

Note-IHC: suggested antigen retrieval with TE buffer pH 9.0; (*) Alternatively, antigen retrieval may be performed with citrate buffer pH 6.0

Positive Controls:

WB : HEK-293 cells, HeLa cells, HepG2 cells, PC-3 cells, MCF-7 cells, Jurkat cells, mouse brain tissue, rat brain tissue, pig brain tissue

IHC : mouse brain tissue, human colon cancer tissue

IF/ICC : HepG2 cells,

Background Information

Enolase (ENO), also known as 2-phospho-D-glycerate hydrolase, is a metalloenzyme that catalyzes the dehydration of 2-phospho-D-glycerate into phosphoenolpyruvate in the glycolytic pathway. There are three different ENO isoforms in higher eukaryotes, including ENO1 or α -ENO, ENO2 or γ -ENO, and ENO3 or β -ENO. Furthermore, the expression of the different ENO isoforms is tissue specificity. ENO1 is expressed in almost all kinds of tissue, whereas ENO3 is restricted to muscle tissues and ENO2 is described as a neuron- and neuroendocrine tissue-specific enolase. ENO1 serves multifunctional roles in physiological and pathological processes. (PMID: 32256815). This antibody can recognize ENO1, ENO2, and ENO3.

Storage

Storage:

Store at -20°C . Stable for one year after shipment.

Storage Buffer:

PBS with 0.02% sodium azide and 50% glycerol pH 7.3.

Aliquoting is unnecessary for -20°C storage

*** 20ul sizes contain 0.1% BSA

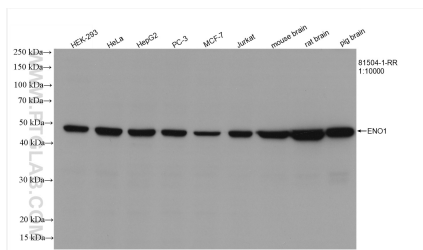
For technical support and original validation data for this product please contact:

T: 1 (888) 4PTGLAB (1-888-478-4522) (toll free in USA), or 1(312) 455-8498 (outside USA)

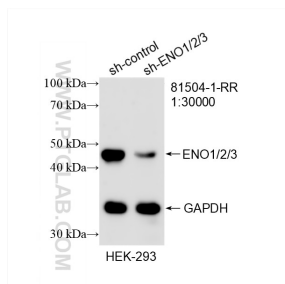
E: proteintech@ptglab.com
W: ptglab.com

This product is exclusively available under Proteintech Group brand and is not available to purchase from any other manufacturer.

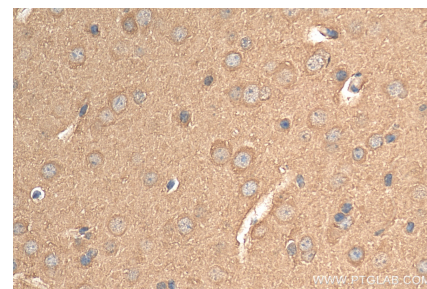
Selected Validation Data



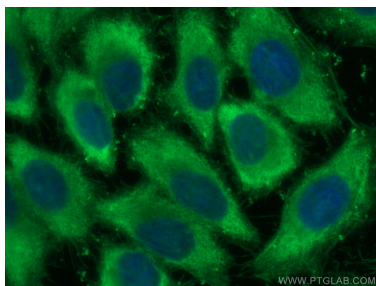
Various lysates were subjected to SDS PAGE followed by western blot with 81504-1-RR (ENO1/2/3 antibody) at dilution of 1:10000 incubated at room temperature for 1.5 hours.



WB result of ENO1/2/3 antibody (81504-1-RR; 1:30000; incubated at room temperature for 1.5 hours) with sh-Control and sh-ENO1/2/3 transfected HEK-293 cells.



Immunohistochemical analysis of paraffin-embedded mouse brain tissue slide using 81504-1-RR (ENO1/2/3 antibody) at dilution of 1:1000 (under 40x lens). Heat mediated antigen retrieval with Tris-EDTA buffer (pH 9.0).



Immunofluorescent analysis of (-20°C Ethanol) fixed HepG2 cells using ENO1/2/3 antibody (81504-1-RR, Clone: 6E24) at dilution of 1:200 and CoraLite®488-Conjugated AffiniPure Goat Anti-Rabbit IgG(H+L).