

For Research Use Only

CD206 Recombinant antibody

Catalog Number: 81525-1-RR

6 Publications



Basic Information

Catalog Number: 81525-1-RR	GenBank Accession Number: NM_002438	Purification Method: Protein A purification
Size: 100ul , Concentration: 1000 ug/ml by Nanodrop;	GeneID (NCBI): 4360	CloneNo.: 1G15
Source: Rabbit	UNIPROT ID: P22897	Recommended Dilutions: WB 1:5000-1:50000 IHC 1:1000-1:4000 IF-P 1:50-1:500
Isotype: IgG	Full Name: mannose receptor, C type 1	
	Calculated MW: 166 kDa	
	Observed MW: 170 kDa	

Applications

Tested Applications: WB, IHC, IF-P, ELISA	Positive Controls:
Cited Applications: WB, IF	WB : pig liver tissue, rat liver tissue, human placenta tissue
Species Specificity: human, rat, pig	IHC : human lung cancer tissue, human colon cancer tissue, human lymphoma tissue, human placenta tissue
Cited Species: human	IF-P : human placenta tissue,
Note-IHC: suggested antigen retrieval with TE buffer pH 9.0; (*) Alternatively, antigen retrieval may be performed with citrate buffer pH 6.0	

Background Information

CD206, also named as MMR, CLEC13D and MRC1, is a type I membrane receptor that mediates the endocytosis of glycoproteins by macrophages. CD206 has been shown to bind high-mannose structures on the surface of potentially pathogenic viruses, bacteria, and fungi so that they can be neutralized by phagocytic engulfment. CD206 is a 170 kDa transmembrane protein which contains 5 domains: an amino-terminal cysteine-rich region, a fibronectin type II repeat, a series of eight tandem lectin-like carbohydrate recognition domains (responsible for the recognition of mannose and fucose), a transmembrane domain, and an intracellular carboxy-terminal tail. It is expressed on most tissue macrophages, in vitro derived dendritic cells, lymphatic and sinusoidal endothelia.

Notable Publications

Author	Pubmed ID	Journal	Application
Lili Zhang	39983815	Life Sci	WB
Eriko Yasuda	39892838	Am J Obstet Gynecol	IF
Bichen Zhao	39647630	J Dairy Sci	WB,IF

Storage

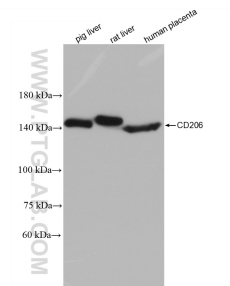
Storage:
Store at -20°C. Stable for one year after shipment.
Storage Buffer:
PBS with 0.02% sodium azide and 50% glycerol, pH7.3
Aliquoting is unnecessary for -20°C storage

*** 20ul sizes contain 0.1% BSA

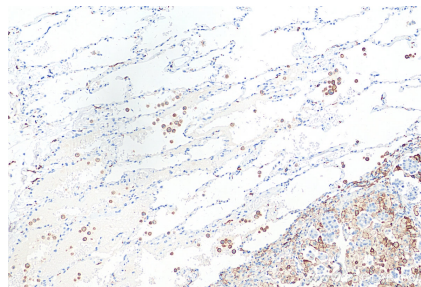
For technical support and original validation data for this product please contact:
T: 1 (888) 4PTGLAB (1-888-478-4522) (toll free in USA), or 1(312) 455-8498 (outside USA)
E: proteintech@ptglab.com
W: ptglab.com

This product is exclusively available under Proteintech Group brand and is not available to purchase from any other manufacturer.

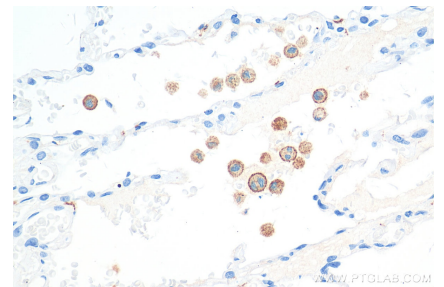
Selected Validation Data



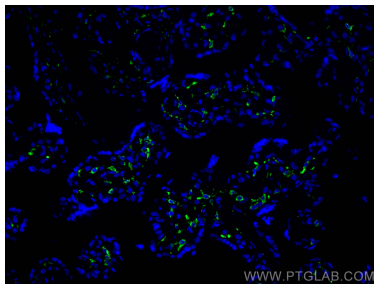
Various lysates were subjected to SDS PAGE followed by western blot with 81525-1-RR (CD206 antibody) at dilution of 1:10000 incubated at room temperature for 1.5 hours.



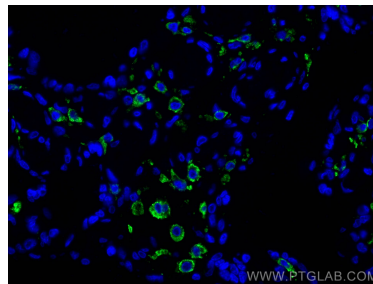
Immunohistochemical analysis of paraffin-embedded human lung cancer tissue slide using 81525-1-RR (CD206 antibody) at dilution of 1:2000 (under 10x lens). Heat mediated antigen retrieval with Tris-EDTA buffer (pH 9.0).



Immunohistochemical analysis of paraffin-embedded human lung cancer tissue slide using 81525-1-RR (CD206 antibody) at dilution of 1:2000 (under 40x lens). Heat mediated antigen retrieval with Tris-EDTA buffer (pH 9.0).



Immunofluorescent analysis of (4% PFA) fixed paraffin-embedded human placenta tissue using CD206 antibody (81525-1-RR, Clone: 1G15) at dilution of 1:200 and CoraLite® 488-Conjugated AffiniPure Goat Anti-Rabbit IgG(H+L) (SA00013-2). Heat mediated antigen retrieval with Tris-EDTA buffer (pH 9.0).



Immunofluorescent analysis of (4% PFA) fixed paraffin-embedded human placenta tissue using CD206 antibody (81525-1-RR, Clone: 1G15) at dilution of 1:200 and CoraLite® 488-Conjugated AffiniPure Goat Anti-Rabbit IgG(H+L) (SA00013-2). Heat mediated antigen retrieval with Tris-EDTA buffer (pH 9.0).