

For Research Use Only

# FKBP10/FKBP65 Recombinant antibody

Catalog Number: 81567-1-RR

Featured Product



## Basic Information

<b>Catalog Number:</b> 81567-1-RR	<b>GenBank Accession Number:</b> BC016467	<b>Purification Method:</b> Protein A purification
<b>Size:</b> 100ul , Concentration: 500 ug/ml by Nanodrop;	<b>GeneID (NCBI):</b> 60681	<b>CloneNo.:</b> S94
<b>Source:</b> Rabbit	<b>UNIPROT ID:</b> Q96AY3	<b>Recommended Dilutions:</b> WB 1:2000-1:11800 IHC 1:50-1:500
<b>Isotype:</b> IgG	<b>Full Name:</b> FK506 binding protein 10, 65 kDa	
<b>Immunogen Catalog Number:</b> AG2814	<b>Calculated MW:</b> 582 aa, 64 kDa	
	<b>Observed MW:</b> 65-70 kDa	

## Applications

<b>Tested Applications:</b> WB, IHC, ELISA	<b>Positive Controls:</b>
<b>Species Specificity:</b> human	<b>WB :</b> HEK-293 cells, HeLa cells, A375 cells
<b>Note-IHC:</b> suggested antigen retrieval with <b>TE buffer pH 9.0; (*) Alternatively, antigen retrieval may be performed with citrate buffer pH 6.0</b>	<b>IHC :</b> human ovary tumor tissue,

## Background Information

FKBP10, also known as FKBP65, is a 65 kDa FK506 binding protein that is a member of the FKBP-type peptidyl-prolyl cis/trans isomerase family. This protein localizes to the endoplasmic reticulum and acts as a molecular chaperone and binding partner of type I collagen. FKBP65 is expressed in developing tissues and re-expressed in adult tissues following injury. As documented, FKBP10 has been detected to play important roles in the initiation and progression of cancers.

## Storage

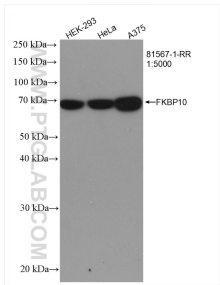
**Storage:**  
Store at -20°C. Stable for one year after shipment.  
**Storage Buffer:**  
PBS with 0.02% sodium azide and 50% glycerol pH 7.3.  
**Aliquoting is unnecessary for -20°C storage**

\*\*\* 20ul sizes contain 0.1% BSA

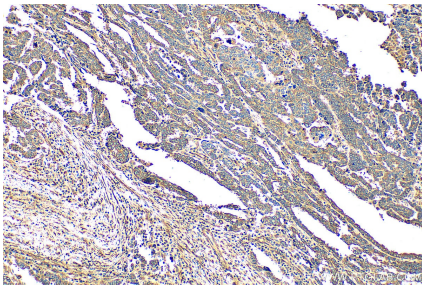
For technical support and original validation data for this product please contact:  
T: 1 (888) 4PTGLAB (1-888-478-4522) (toll free in USA), or 1(312) 455-8498 (outside USA)  
E: [proteintech@ptglab.com](mailto:proteintech@ptglab.com)  
W: [ptglab.com](http://ptglab.com)

This product is exclusively available under Proteintech Group brand and is not available to purchase from any other manufacturer.

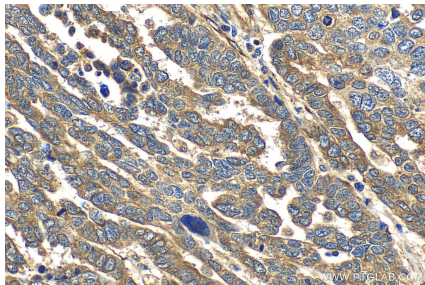
Selected Validation Data



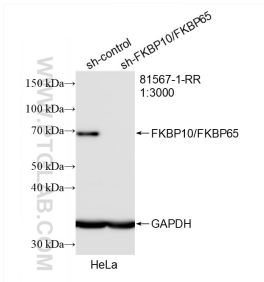
Various lysates were subjected to SDS PAGE followed by western blot with 81567-1-RR (FKBP10/FKBP65 antibody) at dilution of 1:5000 incubated at room temperature for 1.5 hours.



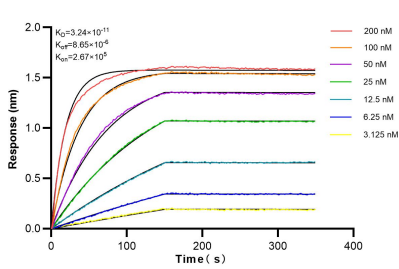
Immunohistochemical analysis of paraffin-embedded human ovary tumor tissue slide using 81567-1-RR (FKBP10/FKBP65 antibody) at dilution of 1:200 (under 10x lens). Heat mediated antigen retrieval with Tris-EDTA buffer (pH 9.0).



Immunohistochemical analysis of paraffin-embedded human ovary tumor tissue slide using 81567-1-RR (FKBP10/FKBP65 antibody) at dilution of 1:200 (under 40x lens). Heat mediated antigen retrieval with Tris-EDTA buffer (pH 9.0).



WB result of FKBP10/FKBP65 antibody (81567-1-RR; 1:3000; incubated at room temperature for 1.5 hours) with sh-Control and sh-FKBP10/FKBP65 transfected HeLa cells.



Biolayer interferometry (BLI) kinetic assays of 81567-1-RR against Human FKBP10/FKBP65 were performed. The affinity constant is 32.4 pM.