

For Research Use Only

# ECHS1 Recombinant antibody

Catalog Number: 81611-1-RR

Featured Product



## Basic Information

Catalog Number:

81611-1-RR

Size:

100ul, Concentration: 1000 ug/ml by Nanodrop;

Source:

Rabbit

Isotype:

IgG

Immunogen Catalog Number:

AG1842

GenBank Accession Number:

BC008906

GeneID (NCBI):

1892

UNIPROT ID:

P30084

Full Name:

enoyl Coenzyme A hydratase, short chain, 1, mitochondrial

Calculated MW:

31 kDa

Observed MW:

30 kDa

Purification Method:

Protein A purification

CloneNo.:

5G5

Recommended Dilutions:

WB 1:5000-1:50000

IHC 1:500-1:2000

IF/ICC 1:500-1:2000

## Applications

Tested Applications:

WB, IHC, IF/ICC, ELISA

Species Specificity:

human, mouse, rat

**Note-IHC: suggested antigen retrieval with TE buffer pH 9.0; (\*) Alternatively, antigen retrieval may be performed with citrate buffer pH 6.0**

Positive Controls:

WB: HeLa cells, MCF-7 cells, mouse liver tissue, L02 cells, Caco-2 cells, HepG2 cells, HEK-293 cells, PC-3 cells, rat liver tissue

IHC: human prostate cancer tissue, human colon tissue

IF/ICC: HeLa cells,

## Background Information

Enoyl-coenzyme A hydratase (ECHS1) is a mitochondrial protein which catalyzes the hydration of 2-trans-enoyl-coenzyme A intermediates to L-3-hydroxyacyl-coenzyme A, playing a key role in metabolism of fatty acids in mitochondria. ECHS1 is highly expressed in muscle, liver and fibroblasts. Altered expression of ECHS1 has been considered a characteristic feature of mitochondria dysfunction. (23275097, 23235493)

## Storage

Storage:

Store at -20°C. Stable for one year after shipment.

Storage Buffer:

PBS with 0.02% sodium azide and 50% glycerol pH 7.3.

Aliquoting is unnecessary for -20°C storage

\*\*\* 20ul sizes contain 0.1% BSA

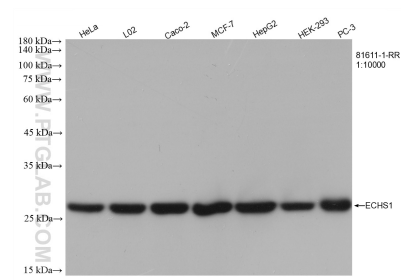
For technical support and original validation data for this product please contact:

T: 1 (888) 4PTGLAB (1-888-478-4522) (toll free in USA), or 1(312) 455-8498 (outside USA)

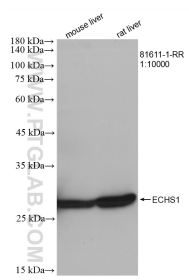
E: [proteintech@ptglab.com](mailto:proteintech@ptglab.com)  
W: [ptglab.com](http://ptglab.com)

This product is exclusively available under Proteintech Group brand and is not available to purchase from any other manufacturer.

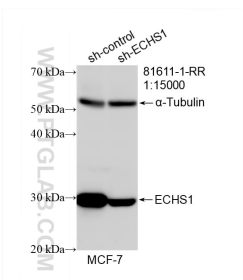
Selected Validation Data



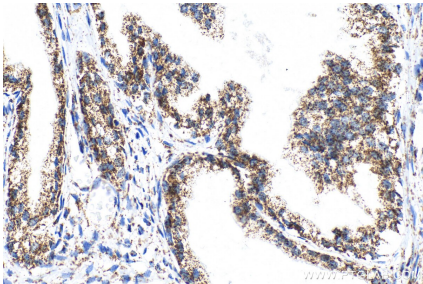
Various lysates were subjected to SDS PAGE followed by western blot with 81611-1-RR (ECHS1 antibody) at dilution of 1:10000 incubated at room temperature for 1.5 hours.



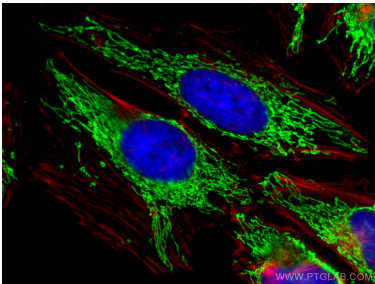
Various lysates were subjected to SDS PAGE followed by western blot with 81611-1-RR (ECHS1 antibody) at dilution of 1:10000 incubated at room temperature for 1.5 hours.



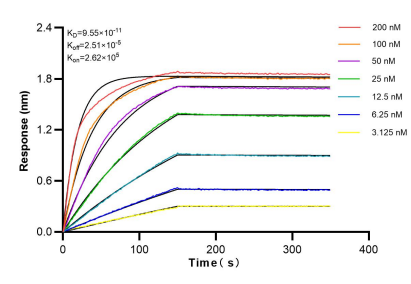
WB result of ECHS1 antibody (81611-1-RR; 1:15000; incubated at room temperature for 1.5 hours) with sh-Control and sh-ECHS1 transfected MCF-7 cells.



Immunohistochemical analysis of paraffin-embedded human prostate cancer tissue slide using 81611-1-RR (ECHS1 antibody) at dilution of 1:1000 (under 40x lens). Heat mediated antigen retrieval with Tris-EDTA buffer (pH 9.0).



Immunofluorescent analysis of (4% PFA) fixed HeLa cells using ECHS1 antibody (81611-1-RR, Clone: 5G5 ) at dilution of 1:1000 and CoraLite® 488-Conjugated AffiniPure Goat Anti-Rabbit IgG(H+L), CL594-phalloidin (red).



Bi-layer interferometry (BLI) kinetic assays of 81611-1-RR against Human ECHS1 were performed. The affinity constant is 95.5 pM.