

For Research Use Only

# BCL6 Recombinant antibody

Catalog Number: 81754-1-RR



## Basic Information

<b>Catalog Number:</b> 81754-1-RR	<b>GenBank Accession Number:</b> BC150184	<b>Purification Method:</b> Protein A purification
<b>Size:</b> 100ul , Concentration: 1000 ug/ml by Nanodrop;	<b>GeneID (NCBI):</b> 604	<b>CloneNo.:</b> 3K6
<b>Source:</b> Rabbit	<b>UNIPROT ID:</b> P41182	<b>Recommended Dilutions:</b> WB 1:5000-1:50000 IP 0.5-4.0 ug for 1.0-3.0 mg of total protein lysate IHC 1:500-1:2000
<b>Isotype:</b> IgG	<b>Full Name:</b> B-cell CLL/lymphoma 6	
<b>Immunogen Catalog Number:</b> AG15519	<b>Calculated MW:</b> 706 aa, 79 kDa	
	<b>Observed MW:</b> 79-95 kDa	

## Applications

<b>Tested Applications:</b> WB, IHC, FC (Intra), IP, ELISA	<b>Positive Controls:</b> WB : Ramos cells, A20 cells, Daudi cells IP : Ramos cells, IHC : human tonsillitis tissue,
<b>Species Specificity:</b> human, mouse	
<b>Note-IHC: suggested antigen retrieval with TE buffer pH 9.0; (*) Alternatively, antigen retrieval may be performed with citrate buffer pH 6.0</b>	

## Background Information

BCL6, a zinc finger transcription factor, contains an N-terminal BTB/POZ domain and C-terminal zinc finger DNA-binding motifs and represses transcription of a wide range of target proteins and microRNAs. BCL6 protein has been reported as a master regulator of B lymphocyte development and growth, and altered BCL6 protein expression was implicated in pathogenesis of diverse human hematologic malignancies, especially in the diffuse large B cell lymphoma (DLBCL). BCL6 is required for the development of T follicular helper T cells (TFH), a helper T cell subset required for the formation of mature and productive GCs. BCL6 has also been shown to play important regulatory roles in macrophages.

## Storage

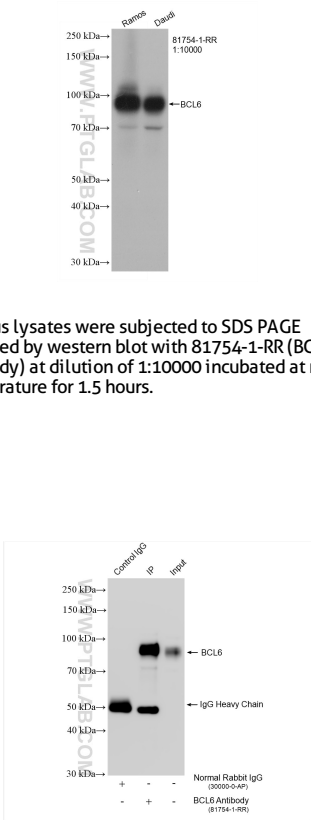
**Storage:**  
Store at -20°C. Stable for one year after shipment.  
**Storage Buffer:**  
PBS with 0.02% sodium azide and 50% glycerol pH 7.3.  
Aliquoting is unnecessary for -20°C storage

\*\*\* 20ul sizes contain 0.1% BSA

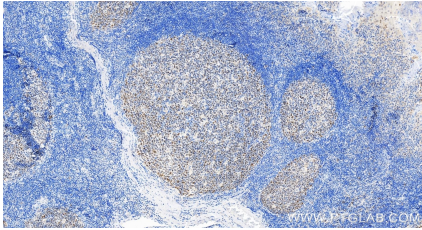
For technical support and original validation data for this product please contact:  
T: 1 (888) 4PTGLAB (1-888-478-4522) (toll free in USA), or 1(312) 455-8498 (outside USA)  
E: [proteintech@ptglab.com](mailto:proteintech@ptglab.com)  
W: [ptglab.com](http://ptglab.com)

This product is exclusively available under Proteintech Group brand and is not available to purchase from any other manufacturer.

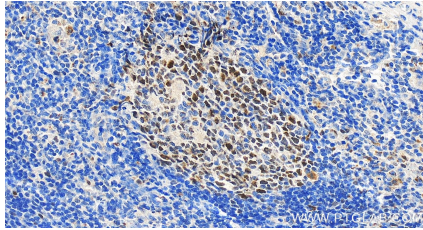
Selected Validation Data



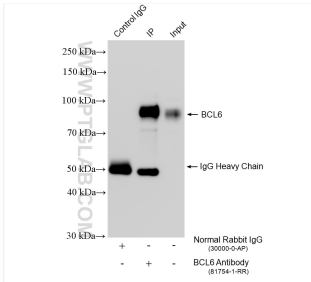
Various lysates were subjected to SDS PAGE followed by western blot with 81754-1-RR (BCL6 antibody) at dilution of 1:10000 incubated at room temperature for 1.5 hours.



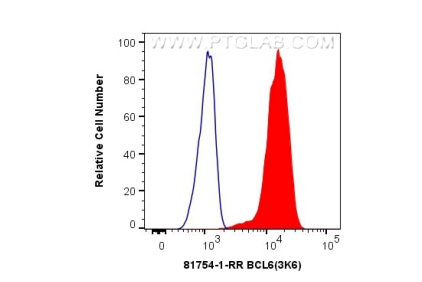
Immunohistochemical analysis of paraffin-embedded human tonsillitis tissue slide using 81754-1-RR (BCL6 antibody) at dilution of 1:1000 (under 10x lens). Heat mediated antigen retrieval with Tris-EDTA buffer (pH 9.0).



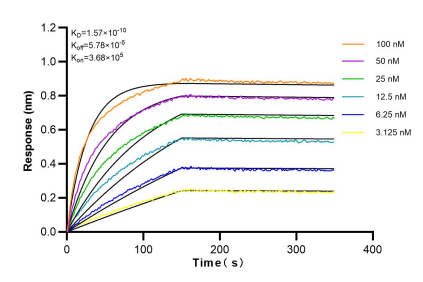
Immunohistochemical analysis of paraffin-embedded human tonsillitis tissue slide using 81754-1-RR (BCL6 antibody) at dilution of 1:1000 (under 40x lens). Heat mediated antigen retrieval with Tris-EDTA buffer (pH 9.0).



IP result of anti-BCL6 (IP:81754-1-RR, 4ug; Detection:81754-1-RR 1:8000) with Ramos cells lysate 1680 ug.



1X10<sup>6</sup> Ramos cells were intracellularly stained with 0.4 ug Anti-Human BCL6 (81754-1-RR, Clone:3K6) and CoraLite®488-Conjugated AffiniPure Goat Anti-Rabbit IgG(H+L) at dilution 1:1000 (red), or 0.4 ug Isotype Control. Cells were fixed and permeabilized with Transcription Factor Staining Buffer Kit (PF00011).



Biolayer interferometry (BLI) kinetic assays of 81754-1-RR against Human BCL6 were performed. The affinity constant is 0.157 nM.