

For Research Use Only

Phospho-CREB1 (Ser133) Recombinant antibody

Catalog Number: 81871-1-RR



Basic Information

Catalog Number: 81871-1-RR	GenBank Accession Number: BC010636	Purification Method: Protein A purification
Size: 100ul, Concentration: 1000 ug/ml by Nanodrop;	GeneID (NCBI): 1385	CloneNo.: 5H5
Source: Rabbit	UNIPROT ID: P16220	Recommended Dilutions: WB 1:5000-1:50000 IHC 1:1000-1:4000
Isotype: IgG	Full Name: cAMP responsive element binding protein 1	
	Calculated MW: 341 aa, 35 kDa	
	Observed MW: 35-46 kDa	

Applications

Tested Applications: WB, IHC, ELISA	Positive Controls:
Species Specificity: human, mouse	WB : Calyculin A treated HEK-293 cells,
Note-IHC: suggested antigen retrieval with TE buffer pH 9.0; (*) Alternatively, antigen retrieval may be performed with citrate buffer pH 6.0	IHC : human prostate cancer tissue, mouse colon tissue

Background Information

The cAMP-response element binding protein (CREB) is localized in the nucleus and acts as a transcription factor, which binds to the cAMP response element (CRE) of the promoters of its target genes, upon phosphorylation at Ser133 by different receptor-activated protein kinases, such as protein kinase A (PKA), calmodulin-dependent protein kinase (CaMK), mitogen-activated protein kinases (MAPK), and other kinases. The activity of CREB1 in neurons has been correlated with various intracellular processes, including proliferation, differentiation, survival, long-term synaptic potentiation, neurogenesis, and neuronal plasticity. CREB1 belongs to the CREB/activating transcription factor (ATF) family of transcription factors. The antibody also detects the phosphorylated form of the CREB-related protein ATF1. (PMID: 30214393, PMID: 33917483, PMID: 32605164)

Storage

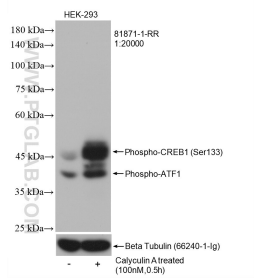
Storage:
Store at -20°C. Stable for one year after shipment.
Storage Buffer:
PBS with 0.02% sodium azide and 50% glycerol pH 7.3.
Aliquoting is unnecessary for -20°C storage

*** 20ul sizes contain 0.1% BSA

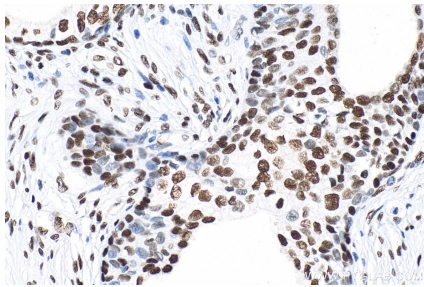
For technical support and original validation data for this product please contact:
T: 1 (888) 4PTGLAB (1-888-478-4522) (toll free in USA), or 1(312) 455-8498 (outside USA)
E: proteintech@ptglab.com
W: ptglab.com

This product is exclusively available under Proteintech Group brand and is not available to purchase from any other manufacturer.

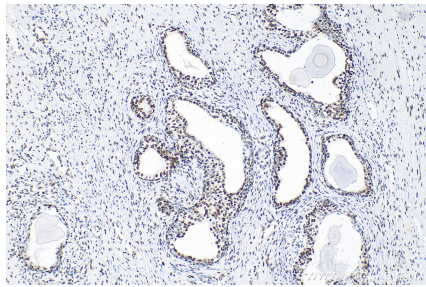
Selected Validation Data



Non-treated and Calyculin A treated HEK-293 cells were subjected to SDS PAGE followed by western blot with 81871-1-RR (Phospho-CREB1 (Ser133) antibody) at dilution of 1:20000 incubated at room temperature for 1 hours. The membrane was stripped and re-blotted with Beta-tubulin antibody as loading control.



Immunohistochemical analysis of paraffin-embedded human prostate cancer tissue slide using 81871-1-RR (Phospho-CREB1 (Ser133) antibody) at dilution of 1:2000 (under 40x lens). Heat mediated antigen retrieval with Tris-EDTA buffer (pH 9.0).



Immunohistochemical analysis of paraffin-embedded human prostate cancer tissue slide using 81871-1-RR (Phospho-CREB1 (Ser133) antibody) at dilution of 1:2000 (under 10x lens). Heat mediated antigen retrieval with Tris-EDTA buffer (pH 9.0).