

For Research Use Only

ZEB2 Recombinant antibody

Catalog Number: 82020-1-RR



Basic Information

Catalog Number: 82020-1-RR	GenBank Accession Number: BC060819	Purification Method: Protein A purification
Size: 100ul , Concentration: 1000 ug/ml by Nanodrop;	GeneID (NCBI): 9839	CloneNo.: 1K22
Source: Rabbit	UNIPROT ID: O60315	Recommended Dilutions: WB 1:2000-1:10000 IHC 1:600-1:2400 IF-P 1:250-1:1000
Isotype: IgG	Full Name: zinc finger E-box binding homeobox 2	
Immunogen Catalog Number: AG5171	Calculated MW: 136 kDa	
	Observed MW: 140-150 kD	

Applications

Tested Applications:
WB, IHC, IF-P, ELISA

Species Specificity:
human

Note-IHC: suggested antigen retrieval with TE buffer pH 9.0; (*) Alternatively, antigen retrieval may be performed with citrate buffer pH 6.0

Positive Controls:

WB : HepG2 cells, HeLa cells, A549 cells, K-562 cells

IHC : human renal cell carcinoma tissue,

IF-P : rat brain tissue,

Background Information

Zinc finger E-box-binding homeobox (ZEB2) is a key transcription factor that acts as a multifunctional regulator during nervous system development. ZEB2 contains two zinc finger domains and a homeodomain-like sequence and interacts with the TGF- β superfamily signaling regulators, Smads, to regulate the expression of their downstream genes. ZEB2 is expressed in the developing neural tube, as well as in neural crest cells, the hippocampus and the cerebral cortex. ZEB2 has previously been implicated in EMT, cell-cycle progression, apoptosis and senescence. ZEB2 was overexpressed in bladder, ovarian, stomach, pancreatic and squamous cell carcinoma, in the intestinal subtype of stomach cancers, and at the invasive front of CRC where EMT is most prominent. ZEB2 also mediates cell-fate decision in neuronal, T cells and hematopoietic stem cells. PMID: 27659015)

Storage

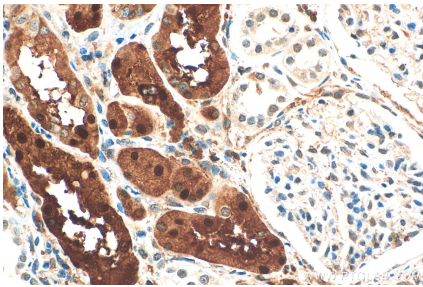
Storage:
Store at -20°C. Stable for one year after shipment.
Storage Buffer:
PBS with 0.02% sodium azide and 50% glycerol pH 7.3.
Aliquoting is unnecessary for -20°C storage

***** 20ul sizes contain 0.1% BSA**

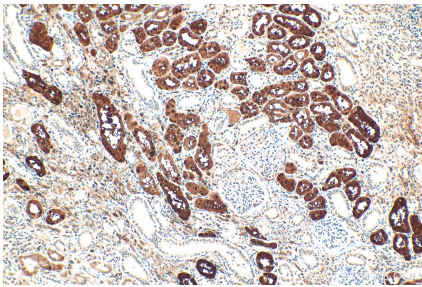
For technical support and original validation data for this product please contact:
T: 1 (888) 4PTGLAB (1-888-478-4522) (toll free in USA), or 1(312) 455-8498 (outside USA)
E: proteintech@ptglab.com
W: ptglab.com

This product is exclusively available under Proteintech Group brand and is not available to purchase from any other manufacturer.

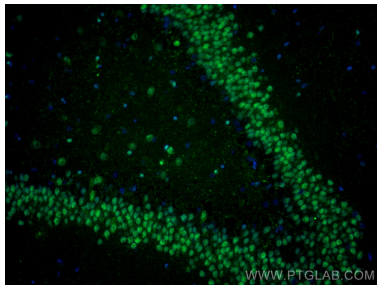
Selected Validation Data



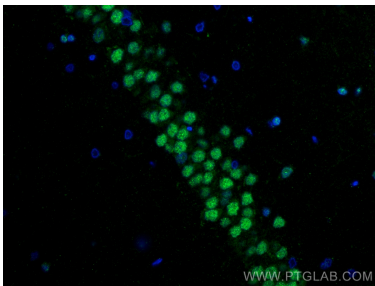
Immunohistochemical analysis of paraffin-embedded human renal cell carcinoma tissue slide using 82020-1-RR (ZEB2 antibody) at dilution of 1:1200 (under 40x lens). Heat mediated antigen retrieval with Tris-EDTA buffer (pH 9.0).



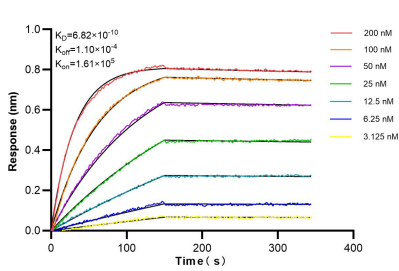
Immunohistochemical analysis of paraffin-embedded human renal cell carcinoma tissue slide using 82020-1-RR (ZEB2 antibody) at dilution of 1:1200 (under 10x lens). Heat mediated antigen retrieval with Tris-EDTA buffer (pH 9.0).



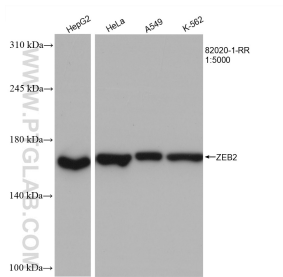
Immunofluorescent analysis of (4% PFA) fixed paraffin-embedded rat brain tissue using ZEB2 antibody (82020-1-RR, Clone: 1K22) at dilution of 1:500 and Multi-rAb CoraLite ® Plus 488-Goat Anti-Rabbit Recombinant Secondary Antibody (H+L) (RGAR002). Heat mediated antigen retrieval with Tris-EDTA buffer (pH 9.0).



Immunofluorescent analysis of (4% PFA) fixed paraffin-embedded rat brain tissue using ZEB2 antibody (82020-1-RR, Clone: 1K22) at dilution of 1:500 and Multi-rAb CoraLite ® Plus 488-Goat Anti-Rabbit Recombinant Secondary Antibody (H+L) (RGAR002). Heat mediated antigen retrieval with Tris-EDTA buffer (pH 9.0).



Biolayer interferometry (BLI) kinetic assays of 82020-1-RR against Human ZEB2 were performed. The affinity constant is 0.682 nM.



Various lysates were subjected to SDS PAGE followed by western blot with 82020-1-RR (ZEB2 antibody) at dilution of 1:5000 incubated at room temperature for 1.5 hours.