

For Research Use Only

Cyclin A2 Recombinant antibody

Catalog Number: 82148-1-RR



Basic Information

Catalog Number: 82148-1-RR	GenBank Accession Number: BC104783	Purification Method: Protein A purification
Size: 100ul , Concentration: 1000 ug/ml by Nanodrop;	GeneID (NCBI): 890	CloneNo.: 1C23
Source: Rabbit	UNIPROT ID: P20248	Recommended Dilutions: WB 1:5000-1:50000
Isotype: IgG	Full Name: cyclin A2	IP 0.5-4.0 ug for 1.0-3.0 mg of total protein lysate
Immunogen Catalog Number: AG12765	Calculated MW: 432 aa, 49 kDa	IHC 1:500-1:2000
	Observed MW: 52 kDa	IF/ICC 1:500-1:2000

Applications

Tested Applications: WB, IHC, IF/ICC, IP, ELISA	Positive Controls:
Species Specificity: Human, mouse, rat	WB : HEK-293 cells, HeLa cells, HepG2 cells, Jurkat cells, K-562 cells, NIH/3T3 cells, HSC-T6 cells
Note-IHC: suggested antigen retrieval with TE buffer pH 9.0; (*) Alternatively, antigen retrieval may be performed with citrate buffer pH 6.0	IP : HeLa cells,
	IHC : mouse colon tissue, rat colon tissue
	IF/ICC : HeLa cells,

Background Information

Cyclin A2 belongs to the highly conserved cyclin family, whose members are characterized by a dramatic periodicity in protein abundance through the cell cycle. Cyclins function as regulators of CDK kinases. Different cyclins exhibit distinct expression and degradation patterns which contribute to the temporal coordination of each mitotic event. In contrast to cyclin A1, which is present only in germ cells, this cyclin is expressed in all tissues tested. Cyclin A2 binds and activates CDC2 or CDK2 kinases, and thus promotes both cell cycle G1/S and G2/M transitions. Cyclin A2 could be phosphorylated during the G2/M.

Storage

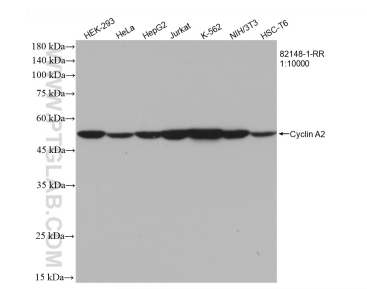
Storage:
Store at -20°C. Stable for one year after shipment.
Storage Buffer:
PBS with 0.02% sodium azide and 50% glycerol pH 7.3.
Aliquoting is unnecessary for -20°C storage

*** 20ul sizes contain 0.1% BSA

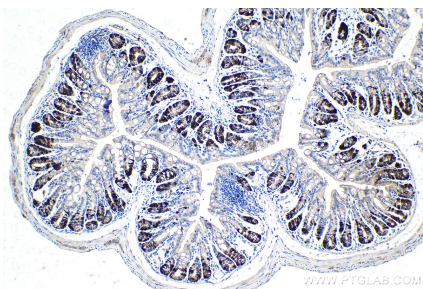
For technical support and original validation data for this product please contact:
T: 1 (888) 4PTGLAB (1-888-478-4522) (toll free in USA), or 1(312) 455-8498 (outside USA)
E: proteintech@ptglab.com
W: ptglab.com

This product is exclusively available under Proteintech Group brand and is not available to purchase from any other manufacturer.

Selected Validation Data



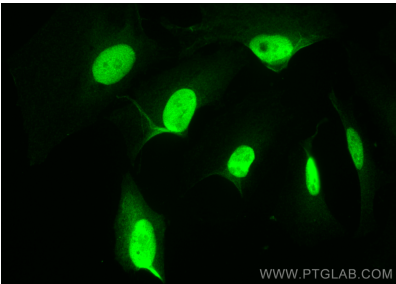
Various lysates were subjected to SDS PAGE followed by western blot with 82148-1-RR (Cyclin A2 antibody) at dilution of 1:10000 incubated at room temperature for 1.5 hours.



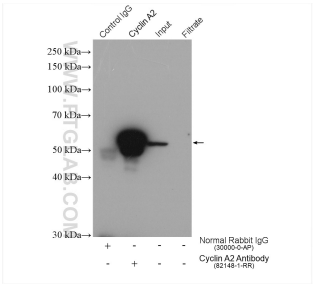
Immunohistochemical analysis of paraffin-embedded mouse colon tissue slide using 82148-1-RR (Cyclin A2 antibody) at dilution of 1:1000 (under 10x lens). Heat mediated antigen retrieval with Tris-EDTA buffer (pH 9.0).



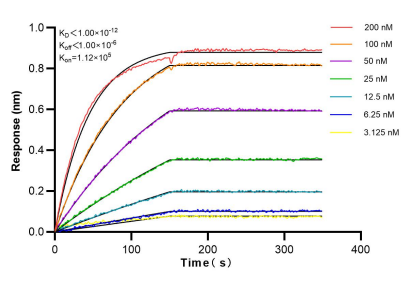
Immunohistochemical analysis of paraffin-embedded rat colon tissue slide using 82148-1-RR (Cyclin A2 antibody) at dilution of 1:1000 (under 10x lens). Heat mediated antigen retrieval with Tris-EDTA buffer (pH 9.0).



Immunofluorescent analysis of (4% PFA) fixed HeLa cells using Cyclin A2 antibody (82148-1-RR, Clone: 1C23) at dilution of 1:1000 and CoraLite®488-Conjugated Goat Anti-Rabbit IgG(H+L).



IP result of anti-Cyclin A2 (IP:82148-1-RR, 4ug; Detection:82148-1-RR 1:3000) with HeLa cells lysate 1720 ug.



Bilayer interferometry (BLI) kinetic assays of 82148-1-RR against Human Cyclin A2 were performed. The affinity constant is below 1 pM.