

For Research Use Only

Phospho-IkB Alpha (Ser32/36) Recombinant antibody

Catalog Number: 82349-1-RR

56 Publications



Basic Information

Catalog Number:

82349-1-RR

Size:

100ul, Concentration: 1000 ug/ml by

Nanodrop;

Source:

Rabbit

Isotype:

IgG

GenBank Accession Number:

BC004983

GeneID (NCBI):

4792

UNIPROT ID:

P25963

Full Name:

nuclear factor of kappa light
polypeptide gene enhancer in B-cells
inhibitor, alpha

Calculated MW:

36 kDa

Observed MW:

36 kDa

Purification Method:

Protein A purification

CloneNo.:

1G21

Recommended Dilutions:

WB: 1:1000-1:4000

IHC: 1:1000-1:4000

FC (Intra): 0.06 ug per 10⁶ cells in a
100 µl suspension

Applications

Tested Applications:

WB, IHC, FC (Intra), ELISA

Cited Applications:

WB, IHC, IF

Species Specificity:

human, mouse, rat

Cited Species:

human, mouse, rat, pig, zebrafish

**Note-IHC: suggested antigen retrieval with
TE buffer pH 9.0; (*) Alternatively, antigen
retrieval may be performed with citrate
buffer pH 6.0**

Positive Controls:

WB : Calyculin A treated HeLa cells, Calyculin A
treated HSC-T6 cells, Calyculin A treated NIH/3T3
cells, rat liver tissue, mouse liver tissue

IHC : human skin cancer tissue,

FC (Intra) : Calyculin A treated HeLa cells,

Background Information

Nuclear factor of kappa light polypeptide gene enhancer in B-cells inhibitor, alpha (NFKB1A, synonyms: IKBA, MAD-3, NFKB1). NFKB1 or NFKB2 is bound to REL, RELA, or RELB to form the NFKB complex. The NFKB complex is inhibited by I-kappa-B proteins (NFKBIA or NFKBIB), which inactivate NF-kappa-B by trapping it in the cytoplasm. Phosphorylation of serine residues on the I-kappa-B proteins by kinases (IKBKA, or IKBKB) marks them for destruction via the ubiquitination pathway, thereby allowing activation of the NF-kappa-B complex. Activated NFKB complex translocates into the nucleus and binds DNA at kappa-B-binding motifs such as 5-prime GGGRNYYCC 3-prime or 5-prime HGGARNYYCC 3-prime. The antibody also detects the phosphorylated form of the NFKBIA (IkB Alpha) (PMID: 16904979, PMID: 28990531 PMID: 10455908).

Notable Publications

Author	Pubmed ID	Journal	Application
Xu Zhou	40017141	Mol Med Rep	WB
Fater A Khadour	40016261	Sci Rep	WB
Yunna Jia	40004224	Int J Mol Sci	WB

Storage

Storage:

Store at -20°C. Stable for one year after shipment.

Storage Buffer:

PBS with 0.02% sodium azide and 50% glycerol, pH7.3

Aliquoting is unnecessary for -20°C storage

*** 20ul sizes contain 0.1% BSA

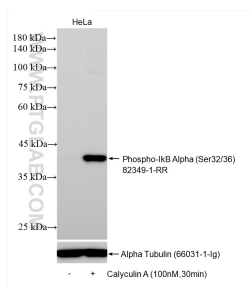
For technical support and original validation data for this product please contact:

T: 1 (888) 4PTGLAB (1-888-478-4522) (toll free
in USA), or 1(312) 455-8498 (outside USA)

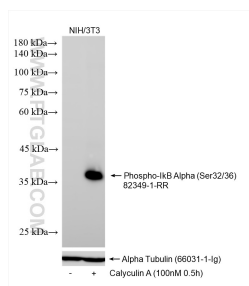
E: proteintech@ptglab.com
W: ptglab.com

This product is exclusively available under Proteintech
Group brand and is not available to purchase from any
other manufacturer.

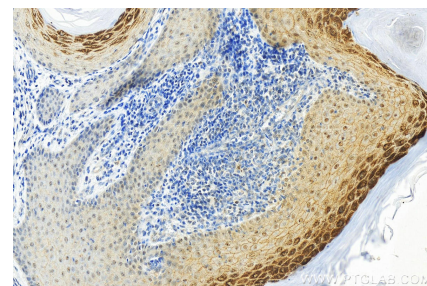
Selected Validation Data



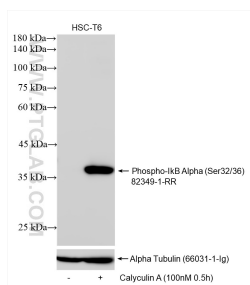
Non-treated and Calyculin A treated HeLa cells were subjected to SDS PAGE followed by western blot with 82349-1-RR (Phospho-IkB Alpha (Ser32/36) antibody) at dilution of 1:2000 incubated at room temperature for 1.5 hours. The membrane was stripped and re-blotted with Alpha Tubulin (66031-1-Ig) antibody as loading control.



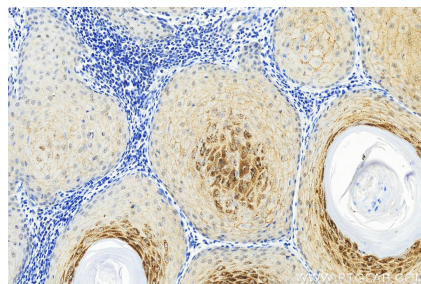
Non-treated and Calyculin A treated NIH/3T3 cells were subjected to SDS PAGE followed by western blot with 82349-1-RR (Phospho-IkB Alpha (Ser32/36) antibody) at dilution of 1:2000 incubated at room temperature for 1.5 hours. The membrane was stripped and re-blotted with Alpha Tubulin (66031-1-Ig) antibody as loading control.



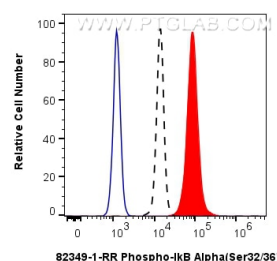
Immunohistochemical analysis of paraffin-embedded skin cancer slide using 82349-1-RR (Phospho-IkB Alpha (Ser32/36) antibody) at dilution of 1:2000 (under 20x lens). Heat mediated antigen retrieval with Tris-EDTA buffer (pH 9.0).



Non-treated and Calyculin A treated HSC-T6 cells were subjected to SDS PAGE followed by western blot with 82349-1-RR (Phospho-IkB Alpha (Ser32/36) antibody) at dilution of 1:2000 incubated at room temperature for 1.5 hours. The membrane was stripped and re-blotted with Alpha Tubulin (66031-1-Ig) antibody as loading control.



Immunohistochemical analysis of paraffin-embedded skin cancer slide using 82349-1-RR (Phospho-IkB Alpha (Ser32/36) antibody) at dilution of 1:2000 (under 20x lens). Heat mediated antigen retrieval with Tris-EDTA buffer (pH 9.0).



1X10⁶ HeLa cells untreated (dashed lines) or treated with Calyculin A which intracellularly stained with 0.06 ug Phospho-IkB Alpha (Ser32/36) Recombinant antibody (82349-1-RR, Clone:1G21) and CoraLite® 488-Conjugated Goat Anti-Rabbit IgG(H+L) (SA00013-2)(red), or 0.06 ug Rabbit IgG Isotype Control Recombinant Antibody (98136-1-RR, Clone: 240953C9) (blue). Cells were fixed with 4% PFA and permeabilized with 90% MeOH.