

For Research Use Only

# Cytokeratin 20 Recombinant antibody

Catalog Number: 82428-1-RR



## Basic Information

<b>Catalog Number:</b> 82428-1-RR	<b>GenBank Accession Number:</b> BC031559	<b>Purification Method:</b> Protein A purification
<b>Size:</b> 100ul , Concentration: 1000 ug/ml by Nanodrop;	<b>GeneID (NCBI):</b> 54474	<b>CloneNo.:</b> 2H10
<b>Source:</b> Rabbit	<b>UNIPROT ID:</b> P35900	<b>Recommended Dilutions:</b> WB 1:5000-1:50000 IHC 1:3000-1:12000 IF/ICC 1:500-1:2000
<b>Isotype:</b> IgG	<b>Full Name:</b> keratin 20	
<b>Immunogen Catalog Number:</b> AG11308	<b>Calculated MW:</b> 424 aa, 48 kDa	
	<b>Observed MW:</b> 46 kDa	

## Applications

<b>Tested Applications:</b> WB, IHC, IF/ICC, FC (Intra), ELISA	<b>Positive Controls:</b> <b>WB</b> : HT-29 cells, COLO 320 cells, pig colon tissue, mouse colon tissue, rat colon tissue <b>IHC</b> : human colon cancer tissue, human appendicitis tissue, human colon tissue, human urothelial carcinoma tissue <b>IF/ICC</b> : HT-29 cells,
<b>Species Specificity:</b> human, mouse, rat, pig	
<b>Note-IHC: suggested antigen retrieval with TE buffer pH 9.0; (*) Alternatively, antigen retrieval may be performed with citrate buffer pH 6.0</b>	

## Background Information

Keratins are a large family of proteins that form the intermediate filament cytoskeleton of epithelial cells, which are classified into two major sequence types. Type I keratins are a group of acidic intermediate filament proteins, including K9-K23, and the hair keratins Ha1-Ha8. Type II keratins are the basic or neutral counterparts to the acidic type I keratins, including K1-K8, and the hair keratins, Hb1-Hb6. Keratin 20 is a type I cytokeratin. It is a major cellular protein of mature enterocytes and goblet cells and is specifically found in the gastric and intestinal mucosa.

## Storage

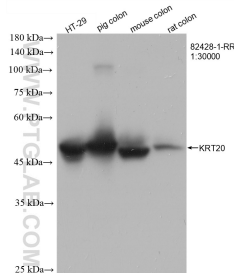
**Storage:**  
Store at -20°C. Stable for one year after shipment.  
**Storage Buffer:**  
PBS with 0.02% sodium azide and 50% glycerol pH 7.3.  
**Aliquoting is unnecessary for -20°C storage**

\*\*\* 20ul sizes contain 0.1% BSA

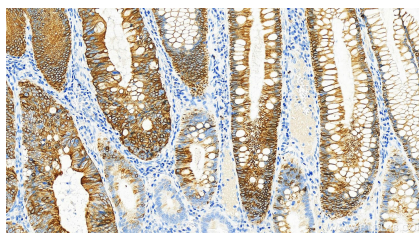
For technical support and original validation data for this product please contact:  
T: 1 (888) 4PTGLAB (1-888-478-4522) (toll free in USA), or 1(312) 455-8498 (outside USA)  
E: [proteintech@ptglab.com](mailto:proteintech@ptglab.com)  
W: [ptglab.com](http://ptglab.com)

This product is exclusively available under Proteintech Group brand and is not available to purchase from any other manufacturer.

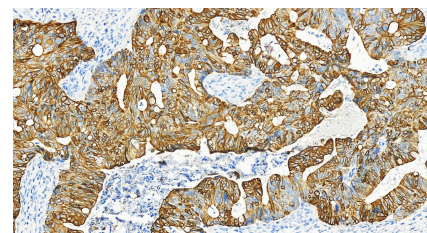
## Selected Validation Data



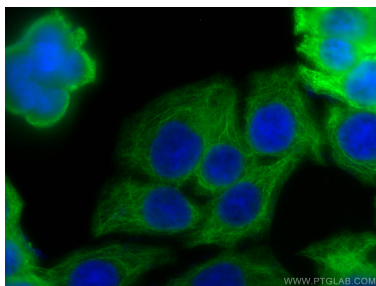
Various lysates were subjected to SDS PAGE followed by western blot with 82428-1-RR (Cytokeratin 20 antibody) at dilution of 1:22000 incubated at room temperature for 1.5 hours.



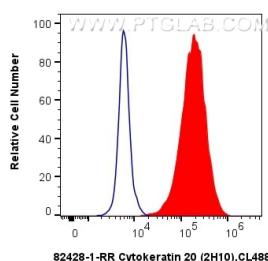
Immunohistochemical analysis of paraffin-embedded human colon cancer slide using 82428-1-RR (Cytokeratin 20 antibody) at dilution of 1:6000 (under 20x lens). Heat mediated antigen retrieval with Tris-EDTA buffer (pH 9.0).



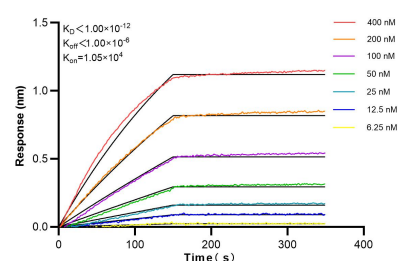
Immunohistochemical analysis of paraffin-embedded human colon cancer slide using 82428-1-RR (Cytokeratin 20 antibody) at dilution of 1:6000 (under 20x lens). Heat mediated antigen retrieval with Tris-EDTA buffer (pH 9.0).



Immunofluorescent analysis of (-20°C Ethanol) fixed HT-29 cells using Cytokeratin 20 antibody (82428-1-RR, Clone: 2H10) at dilution of 1:1000 and CoraLite®488-Conjugated AffiniPure Goat Anti-Rabbit IgG(H+L).



1X10<sup>6</sup> HT-29 cells were intracellularly stained with 0.4 ug Anti-Human Cytokeratin 20 (82428-1-RR, Clone:2H10) and CoraLite®488-Conjugated AffiniPure Goat Anti-Rabbit IgG(H+L) at dilution 1:1000 (red), or 0.4 ug Rabbit IgG control Rabbit PolyAb (30000-0-AP, Clone: ) (blue). Cells were fixed with 4% PFA and permeabilized with Flow Cytometry Perm Buffer (PF00011-C).



Biolayer interferometry (BLI) kinetic assays of 82428-1-RR against Human Cytokeratin 20 were performed. The affinity constant is below 1 pM.