

For Research Use Only

CUL1 Recombinant antibody

Catalog Number: 82474-1-RR

Featured Product



Basic Information

Catalog Number:

82474-1-RR

Size:

100ul, Concentration: 500 ug/ml by Nanodrop;

Source:

Rabbit

Isotype:

IgG

Immunogen Catalog Number:

AG3585

GenBank Accession Number:

BC034318

GeneID (NCBI):

8454

UNIPROT ID:

Q13616

Full Name:

cullin 1

Calculated MW:

90 kDa

Observed MW:

90 kDa

Purification Method:

Protein A purification

CloneNo.:

5K17

Recommended Dilutions:

WB 1:2000-1:17000

IP 0.5-4.0 ug for 1.0-3.0 mg of total protein lysate

Applications

Tested Applications:

WB, IP, ELISA

Species Specificity:

Human, rat, mouse

Positive Controls:

WB : HeLa cells, A549 cells, HEK-293 cells, MCF-7 cells, NIH/3T3 cells, mouse brain tissue, rat brain tissue

IP : HeLa cells,

Background Information

The cullin family proteins are scaffold proteins for the Ring finger type E3 ligases. Humans express seven cullin proteins: CUL1-3, CUL4A, CUL4B, CUL5, and CUL7. Each cullin protein can form an E3 ligase similar to the prototype Ring-type E3 ligase Skp1-CUL1-F-box complex. The Cullin-RING-finger type E3 ligases are important regulators in early embryonic development, as highlighted by genetic studies demonstrating that knock-out of CUL1, CUL3, or CUL4A in mice results in early embryonic lethality.

Storage

Storage:

Store at -20°C. Stable for one year after shipment.

Storage Buffer:

PBS with 0.02% sodium azide and 50% glycerol pH 7.3.

Aliquoting is unnecessary for -20°C storage

*** 20ul sizes contain 0.1% BSA

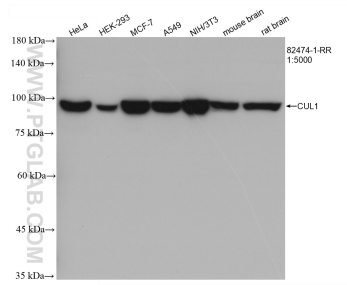
For technical support and original validation data for this product please contact:

T: 1 (888) 4PTGLAB (1-888-478-4522) (toll free in USA), or 1(312) 455-8498 (outside USA)

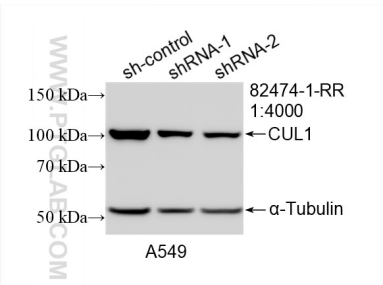
E: proteintech@ptglab.com
W: ptglab.com

This product is exclusively available under Proteintech Group brand and is not available to purchase from any other manufacturer.

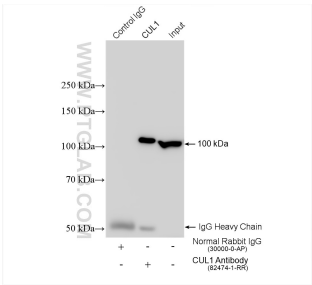
Selected Validation Data



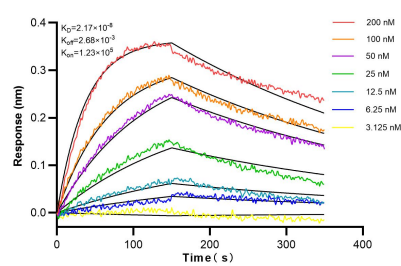
Various lysates were subjected to SDS PAGE followed by western blot with 82474-1-RR (CUL1 antibody) at dilution of 1:5000 incubated at room temperature for 1.5 hours.



WB result of CUL1 antibody (82474-1-RR; 1:4000; incubated at room temperature for 1.5 hours) with sh-Control and sh-CUL1 transfected A549 cells.



IP result of anti-CUL1 (IP:82474-1-RR, 4 μ g; Detection:82474-1-RR 1:1000) with HeLa cells lysate 1280 μ g.



Biolayer interferometry (BLI) kinetic assays of 82474-1-RR against Human CUL1 were performed. The affinity constant is 21.7 nM.