

For Research Use Only

KIF5B Recombinant antibody

Catalog Number: 82485-1-RR

Featured Product



Basic Information

Catalog Number: 82485-1-RR	GenBank Accession Number: BC126279	Purification Method: Protein A purification
Size: 100ul , Concentration: 1000 ug/ml by Nanodrop;	GeneID (NCBI): 3799	CloneNo.: 2B18
Source: Rabbit	UNIPROT ID: P33176	Recommended Dilutions: WB 1:5000-1:50000 IHC 1:500-1:2000 IF/ICC 1:50-1:500
Isotype: IgG	Full Name: kinesin family member 5B	
Immunogen Catalog Number: AG16250	Calculated MW: 963 aa, 110 kDa	
	Observed MW: 110-120 kDa	

Applications

Tested Applications:
WB, IHC, IF/ICC, ELISA

Species Specificity:
human, mouse, rat

Note-IHC: suggested antigen retrieval with **TE buffer pH 9.0; (*)** Alternatively, antigen retrieval may be performed with **citrate buffer pH 6.0**

Positive Controls:

WB : HeLa cells, HepG2 cells, A549 cells, Jurkat cells, mouse heart tissue, mouse brain tissue, rat brain tissue

IHC : human ovarian cancer,

IF/ICC : HepG2 cells,

Background Information

KIF5B, also known as KINH, KNS1, belongs to the Kinesin-1 family. KIF5B contains three structural domains: a globular N-terminal motor domain, a central alpha-helical rod domain, and a globular C-terminal domain. During the G2 phase of the cell cycle in a BICD2-dependent manner, KIF5B antagonizes the dynein function and drives the separation of nuclei and centrosomes (PMID: 20386726). KIF5B drives the polarization of cytosolic granules and microtubule-organizing centers (MTOCs) toward the immune synapse between effector NK lymphocytes and target cells (KIF5B:24088571).

Storage

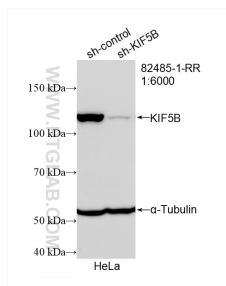
Storage:
Store at -20°C. Stable for one year after shipment.
Storage Buffer:
PBS with 0.02% sodium azide and 50% glycerol pH 7.3.
Aliquoting is unnecessary for -20°C storage

*** 20ul sizes contain 0.1% BSA

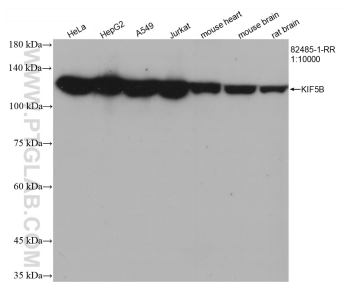
For technical support and original validation data for this product please contact:
T: 1 (888) 4PTGLAB (1-888-478-4522) (toll free in USA), or 1(312) 455-8498 (outside USA)
E: proteintech@ptglab.com
W: ptglab.com

This product is exclusively available under Proteintech Group brand and is not available to purchase from any other manufacturer.

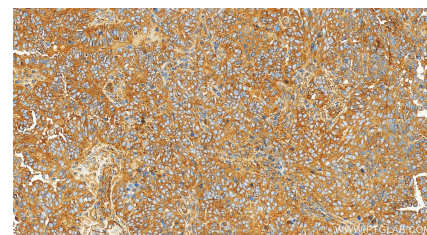
Selected Validation Data



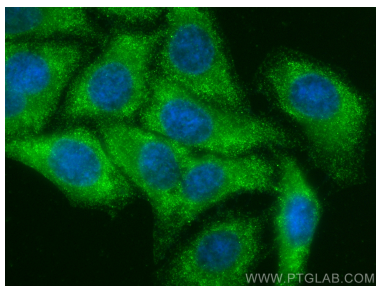
WB result of KIF5B antibody (82485-1-RR; 1:6000; incubated at room temperature for 1.5 hours) with sh-Control and sh-KIF5B transfected HeLa cells.



Various lysates were subjected to SDS PAGE followed by western blot with 82485-1-RR (KIF5B antibody) at dilution of 1:10000 incubated at room temperature for 1.5 hours.



Immunohistochemical analysis of paraffin-embedded human ovarian cancer slide using 82485-1-RR (KIF5B antibody) at dilution of 1:1000 (under 20x lens). Heat mediated antigen retrieval with Tris-EDTA buffer (pH 9.0).



Immunofluorescent analysis of (-20°C Ethanol) fixed HepG2 cells using KIF5B antibody (82485-1-RR, Clone: 2B18) at dilution of 1:200 and Multi-rAb CoraLite® Plus 488-Goat Anti-Rabbit Recombinant Secondary Antibody (H+L) (RGAR002).