

For Research Use Only

SHP2 Recombinant antibody

Catalog Number: 82503-1-RR

Featured Product



Basic Information

Catalog Number:

82503-1-RR

Size:

100ul, Concentration: 1000 ug/ml by Nanodrop;

Source:

Rabbit

Isotype:

IgG

Immunogen Catalog Number:

AG13660

GenBank Accession Number:

BC008692

GeneID (NCBI):

5781

UNIPROT ID:

Q06124

Full Name:

protein tyrosine phosphatase, non-receptor type 11

Calculated MW:

597 aa, 68 kDa

Observed MW:

68 kDa

Purification Method:

Protein A purification

CloneNo.:

5L23

Recommended Dilutions:

WB 1:5000-1:50000

IP 0.5-4.0 ug for 1.0-3.0 mg of total protein lysate

IHC 1:2000-1:8000

Applications

Tested Applications:

WB, IHC, IP, ELISA

Species Specificity:

human, mouse, rat

Note-IHC: suggested antigen retrieval with TE buffer pH 9.0; (*) Alternatively, antigen retrieval may be performed with citrate buffer pH 6.0

Positive Controls:

WB : HeLa cells, A431 cells, HEK-293 cells, A549 cells, NIH/3T3 cells, HSC-T6 cells

IP : HEK-293 cells,

IHC : rat heart tissue,

Background Information

PTPN11 (protein tyrosine phosphatase, non-receptor type 11), also named as PTP-1D, PTP2, PTP2C, PTP3, SHP2, CFC, CFC, BPTP3, SH-PTP2, SH-PTP3, and MGC14433, belongs to the protein-tyrosine phosphatase family and non-receptor class 2 subfamily. It modulates and regulates signaling through numerous pathways, many of which are active in the developing endocardial cushions and implicated the ERK pathway as a central mechanism (PMID:19017799). Its signaling may play equally important roles in retinal survival in both physiological and pathological conditions (PMID:21576358). Defects in PTPN11 are the cause of LEOPARD syndrome type 1 (LEOPARD1), Noonan syndrome type 1 (NS1), juvenile myelomonocytic leukemia (JMML), and metachondromatosis (MC). It has 3 isoforms produced by alternative splicing.

Storage

Storage:

Store at -20°C. Stable for one year after shipment.

Storage Buffer:

PBS with 0.02% sodium azide and 50% glycerol pH 7.3.

Aliquoting is unnecessary for -20°C storage

*** 20ul sizes contain 0.1% BSA

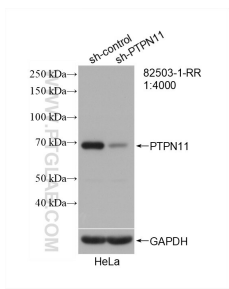
For technical support and original validation data for this product please contact:

T: 1 (888) 4PTGLAB (1-888-478-4522) (toll free in USA), or 1(312) 455-8498 (outside USA)

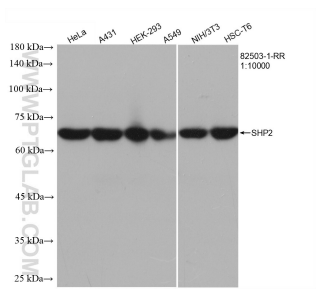
E: proteintech@ptglab.com
W: ptglab.com

This product is exclusively available under Proteintech Group brand and is not available to purchase from any other manufacturer.

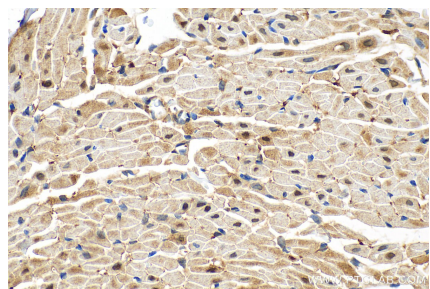
Selected Validation Data



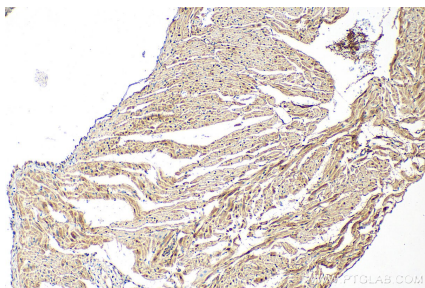
WB result of SHP2 antibody (82503-1-RR; 1:4000; incubated at room temperature for 1.5 hours) with sh-Control and sh-SHP2 transfected HeLa cells.



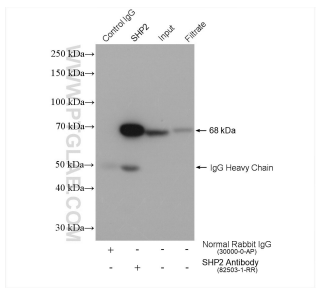
Various lysates were subjected to SDS PAGE followed by western blot with 82503-1-RR (PTPN11 antibody) at dilution of 1:10000 incubated at room temperature for 1.5 hours.



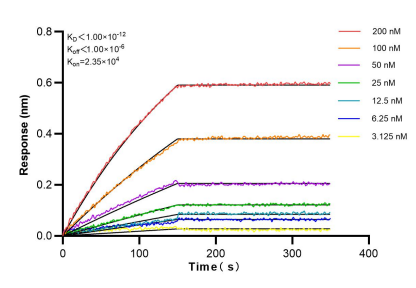
Immunohistochemical analysis of paraffin-embedded rat heart tissue slide using 82503-1-RR (SHP2 antibody) at dilution of 1:4000 (under 40x lens). Heat mediated antigen retrieval with Sodium Citrate buffer (pH 6.0).



Immunohistochemical analysis of paraffin-embedded rat heart tissue slide using 82503-1-RR (SHP2 antibody) at dilution of 1:4000 (under 10x lens). Heat mediated antigen retrieval with Sodium Citrate buffer (pH 6.0).



IP result of anti-PTPN11/SHP2 (IP:82503-1-RR, 4ug; Detection:82503-1-RR 1:8000) with HEK-293 cells lysate 1280 ug.



Bilayer interferometry (BLI) kinetic assays of 82503-1-RR against Human PTPN11/SHP2 were performed. The affinity constant is below 1 pM.