

For Research Use Only

TIM23 Recombinant antibody

Catalog Number: 82540-1-RR



Basic Information

Catalog Number:

82540-1-RR

Size:

100ul, Concentration: 500 ug/ml by Nanodrop;

Source:

Rabbit

Isotype:

IgG

Immunogen Catalog Number:

AG1620

GenBank Accession Number:

BC062707

GeneID (NCBI):

100287932

UNIPROT ID:

O14925

Full Name:

translocase of inner mitochondrial membrane 23

Calculated MW:

22 kDa

Observed MW:

22 kDa

Purification Method:

Protein A purification

CloneNo.:

1H16

Recommended Dilutions:

WB 1:2000-1:10000

IP 0.5-4.0 ug for 1.0-3.0 mg of total protein lysate

IHC 1:50-1:500

IF/ICC 1:400-1:1600

Applications

Tested Applications:

WB, IHC, IF/ICC, IP, ELISA

Species Specificity:

human, mouse, rat

Note-IHC: suggested antigen retrieval with TE buffer pH 9.0; (*) Alternatively, antigen retrieval may be performed with citrate buffer pH 6.0

Positive Controls:

WB : HeLa cells, MCF-7 cells, Jurkat cells, K-562 cells, NIH/3T3 cells, mouse heart tissue, rat heart tissue

IP : HeLa cells,

IHC : mouse heart tissue,

IF/ICC : HepG2 cells,

Background Information

Tim23, a key component of the mitochondrial preprotein translocase, is anchored in the inner membrane by its C-terminal domain and exposes an intermediate domain in the intermembrane space that functions as a presequence receptor. Tim23 is the main component of the translocation channel of the TIM23 complex. (PMID: 10830167, PMID: 25083920)

Storage

Storage:

Store at -20°C. Stable for one year after shipment.

Storage Buffer:

PBS with 0.02% sodium azide and 50% glycerol, pH7.3

Aliquoting is unnecessary for -20°C storage

*** 20ul sizes contain 0.1% BSA

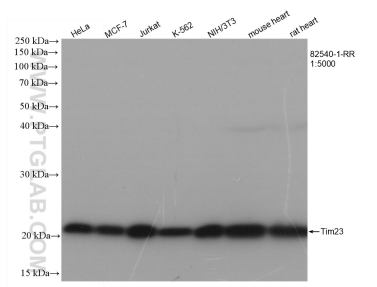
For technical support and original validation data for this product please contact:

T: 1 (888) 4PTGLAB (1-888-478-4522) (toll free in USA), or 1(312) 455-8498 (outside USA)

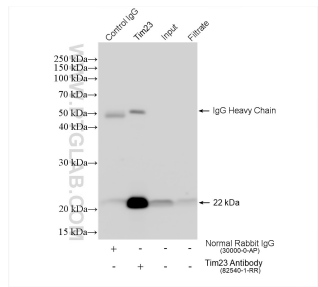
E: proteintech@ptglab.com
W: ptglab.com

This product is exclusively available under Proteintech Group brand and is not available to purchase from any other manufacturer.

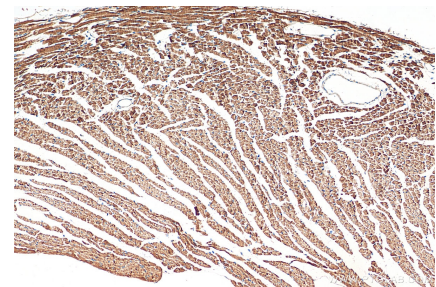
Selected Validation Data



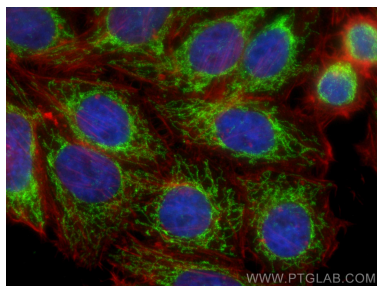
Various lysates were subjected to SDS PAGE followed by western blot with 82540-1-RR (Tim23 antibody) at dilution of 1:5000 incubated at room temperature for 1.5 hours.



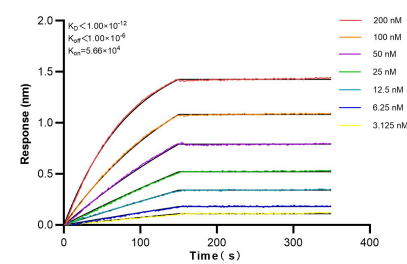
IP result of anti-Tim23 (IP:82540-1-RR, 4ug; Detection:82540-1-RR 1:1000) with HeLa cells lysate 1280 ug.



Immunohistochemical analysis of paraffin-embedded mouse heart tissue slide using 82540-1-RR (Tim23 antibody) at dilution of 1:200 (under 10x lens). Heat mediated antigen retrieval with Tris-EDTA buffer (pH 9.0).



Immunofluorescent analysis of (4% PFA) fixed HepG2 cells using TIM23 antibody (82540-1-RR, Clone: 1H16) at dilution of 1:500 and CoraLite®488-Conjugated AffiniPure Goat Anti-Rabbit IgG(H+L), CL594-Phalloidin (red).



Biolayer interferometry (BLI) kinetic assays of 82540-1-RR against Human Tim23 were performed. The affinity constant is below 1 pM.