

For Research Use Only

MTA3 Recombinant antibody, PBS Only (Detector)

Catalog Number: 83042-1-PBS



Basic Information

Catalog Number: 83042-1-PBS	GenBank Accession Number: BC053631	Purification Method: Protein A purification
Size: 100ug, Concentration: 1mg/ml by Nanodrop;	GeneID (NCBI): 57504	CloneNo.: 230350A8
Source: Rabbit	UNIPROT ID: Q9BTC8	
Isotype: IgG	Full Name: metastasis associated 1 family, member 3	
Immunogen Catalog Number: AG6400	Calculated MW: 68 kDa	

Applications

Tested Applications:
Cytometric bead array, Sandwich ELISA, Indirect ELISA, Sample test

Species Specificity:
human

Product Information

83042-1-PBS targets MTA3 as part of a matched antibody pair:

MP00017-2: 83042-3-PBS capture and 83042-1-PBS detection (validated in Cytometric bead array, Sandwich ELISA)

Unconjugated rabbit recombinant monoclonal antibody in PBS only (BSA and azide free) storage buffer at a concentration of 1 mg/mL, ready for conjugation. Created using Proteintech's proprietary in-house recombinant technology. Recombinant production enables unrivalled batch-to-batch consistency, easy scale-up, and future security of supply.

This conjugation ready format makes antibodies ideal for use in many applications including: ELISAs, multiplex assays requiring matched pairs, mass cytometry, and multiplex imaging applications. Antibody use should be optimized by the end user for each application and assay.

Storage

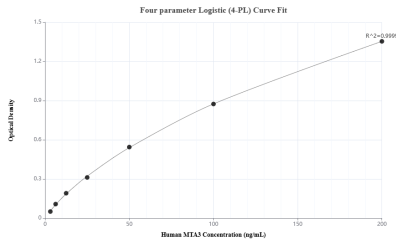
Storage:
Store at -80°C.

Storage Buffer:
PBS only, pH7.3

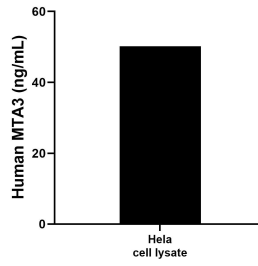
For technical support and original validation data for this product please contact:
T: 1 (888) 4PTGLAB (1-888-478-4522) (toll free in USA), or 1(312) 455-8498 (outside USA) E: proteintech@ptglab.com
W: ptglab.com

This product is exclusively available under Proteintech Group brand and is not available to purchase from any other manufacturer.

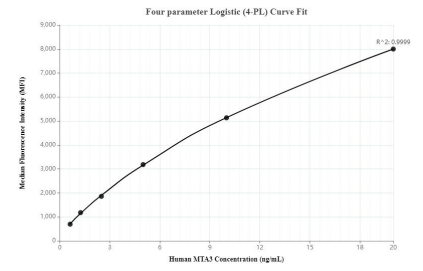
Selected Validation Data



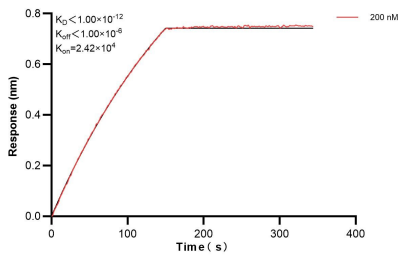
Sandwich ELISA standard curve of MP00017-2, Human MTA3 Recombinant Matched Antibody Pair - PBS only. 83042-3-PBS was coated to a plate as the capture antibody and incubated with serial dilutions of standard Ag6400. 83042-1-PBS was HRP conjugated as the detection antibody. Range: 3.13-200 ng/mL



HeLa cell lysate was measured. The human MTA3 concentration of detected samples was determined to be 50.22 ng/mL (based on a 3.2 mg/mL extract load).



Cytometric bead array standard curve of MP00017-2, MTA3 Recombinant Matched Antibody Pair, PBS Only. Capture antibody: 83042-3-PBS. Detection antibody: 83042-1-PBS. Standard: Ag6400. Range: 0.625-20 ng/mL



Biolayer interferometry (BLI) kinetic assay of 83042-1-PBS against Human MTA3 was performed. The affinity constant is below 1 pM.