

FOR IN VITRO RESEARCH USE ONLY.  
NOT FOR USE IN HUMANS OR ANIMALS.

# RECOMBINANT HUMAN NFKB2

## Basic Information

**Catalog Number:**  
Ag0662

**Form:**  
Available lyophilized

**Species:**  
human

**Expression Source:**  
*E. coli*-derived, PGEX-4T, with N-terminal GST.

**Biological Activity:**  
Not tested

**Endotoxin Level:**  
Please contact the lab for more information

**Validated Application:**  
Blocking peptide

**Peptide Sequence:**  
GLYPVHLAVRARSPECLDLLVDSGAEVEATERQGGRTALHLATE  
MEELGLVTHLVTKLRANVNRITFAGNITPLHLAAGLGYPILTRLLL  
KAGADIHAENEELCPFPSPTSDSDSDSEGPEKDRSSFRGHT  
PLDLTCSKVKITLLNAAQNTIMEPPLTPSPAGPGLSLGD TALQN  
LEQLLDGPEAQGSWAELAEERLGLRSLVDYRQITSPSGLLRSY  
ELAGGDLAELLEALSDMGLLEEVRLRGPETRDKLPSTEVKEDS  
AYGSQSVGEQAEKLGPPPEPGLCHGHFQPVH  
(600-899 aa encoded by BC002844)

## Reconstitution and Storage

**Reconstitution:**  
Reconstitute at 0.25 µg/µl in 200 µl sterile water for short-term storage.  
Reconstitution with 200 µl 50% glycerol solution is recommended for longer term storage  
(see Stability and Storage for more details).  
If a different concentration is needed for your purposes please adjust the reconstitution  
volume as required (please note: the ion concentration of the final solution will vary  
according to the volume used).  
Note: Centrifuge vial before opening. When reconstituting, gently pipet and wash down  
the sides of the vial to ensure full recovery of the protein into solution.

**Shipping:**  
The product is shipped at ambient temperature. Upon receipt,  
store it immediately at the recommended temperature (see  
below).

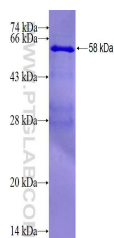
## Stability and Storage

Store for up to 12 months at -20°C to -80°C as lyophilized powder.

## Storage of Reconstituted Protein

**Short Term Storage:**  
Store at 2-8°C for (1-2 weeks).  
**Long Term Storage:**  
Aliquot and store at -20°C to -80°C for up to 3 months, buffer containing 50% glycerol  
is recommended for reconstitution. Avoid repeat freeze-thaw cycles.

## Selected Validation Data



For technical support and original validation data for this  
product please contact:

T: 1 (888) 4PTGLAB (1-888-  
478-4522) (toll free in USA),  
or 1(312) 455-8498 (outside  
USA)

E: [proteintech@ptglab.com](mailto:proteintech@ptglab.com)  
W: [ptglab.com](http://ptglab.com)

This product is exclusively available under  
Proteintech Group brand and is not available to  
purchase from any other manufacturer.