

FOR IN VITRO RESEARCH USE ONLY.
NOT FOR USE IN HUMANS OR ANIMALS.

RECOMBINANT HUMAN GTF2H2C

Basic Information

Catalog Number:
Ag12482

Form:
Available lyophilized

Species:
human

Expression Source:
E. coli-derived, PET28a, with N-terminal 6*His.

Biological Activity:
Not tested

Endotoxin Level:
Please contact the lab for more information

Validated Application:
Blocking peptide

Peptide Sequence:
MDEEPERTKRWEGGYERTWEI LKEDESGSLKATIEDILFKAKRK
RVFEHGGQVRLGVMRHLVWV DGSRTMEDQDLKPNRLTCTLK
LLEYFVEEYFDQNPISQIGIIVTKSKRAEKLTEL SGNPRKHITSLK
EAVDMTCHGEP SLYNSLSMAMQTLKHMPGHTSREVLIFSSLTTC
DPSNIYDLIKTLKAAKIRVSVI GLSAEVRVCTVLARETGGTYHML
DESHYKELLTHIHLSPPPASSSSECSLIRMGFPQHTIASLSDQDA
KPSFSMAHL DGNTEPGLTLGGYFCPQCRAKYCELPVECKICGL
TLVSAFHLARSYHHLFPLDAFQEI PLEEYNGERFCYGCQGELK
DGHVYVCAVCQNVF CVD CDV FVHDSLHCCPGCIHKIPAPSGV
(1-395 aa encoded by BC105980)

Reconstitution and Storage

Reconstitution:
Reconstitute at 0.25 µg/µl in 200 µl sterile water for short-term storage.
Reconstitution with 200 µl 50% glycerol solution is recommended for longer term storage
(see Stability and Storage for more details).
If a different concentration is needed for your purposes please adjust the reconstitution
volume as required (please note: the ion concentration of the final solution will vary
according to the volume used).
Note: Centrifuge vial before opening. When reconstituting, gently pipet and wash down
the sides of the vial to ensure full recovery of the protein into solution.

Shipping:
The product is shipped at ambient temperature. Upon receipt,
store it immediately at the recommended temperature (see
below).

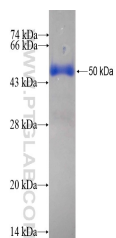
Stability and Storage

Store for up to 12 months at -20°C to -80°C as lyophilized powder.

Storage of Reconstituted Protein

Short Term Storage:
Store at 2-8°C for (1-2 weeks).
Long Term Storage:
Aliquot and store at -20°C to -80°C for up to 3 months, buffer containing 50% glycerol
is recommended for reconstitution. Avoid repeat freeze-thaw cycles.

Selected Validation Data



For technical support and original validation data for this

product, please contact:
T: 1 (888) 4PTGLAB (1-888-
478-4522) (toll free in USA),
or 1(312) 455-8498 (outside
USA)

E: proteintech@ptglab.com
W: ptglab.com

This product is exclusively available under
Proteintech Group brand and is not available to
purchase from any other manufacturer.