

FOR IN VITRO RESEARCH USE ONLY.
NOT FOR USE IN HUMANS OR ANIMALS.

RECOMBINANT HUMAN QSOX1

Basic Information

Catalog Number:
Ag3396

Size:
50 µg

Form:
Available lyophilized

Species:
human

Expression Source:
E. coli-derived, PGEX-4T, with N-terminal GST.

Biological Activity:
Not tested

Endotoxin Level:
Please contact the lab for more information

Validated Application:
Blocking peptide

Peptide Sequence:
MRRRCNSGSGFPPSLLLLLLWLLAVPGANAAPRSALYSPSDPLTL
LQADTVRGAVLGSRSAAWAVEFFASWCGHCIAFAPTWKALAEDV
KAWRPALYLAALDCAEETNSAVCRDFNIPGFPTVRFKAFKTKN
GSGAVFPVAGADVQTLRERLIDALESHDHTWPPACPPLEPAKLE
EIDGFFARINNEEYLALIFEKGGSYLAREVALDLSQHKGVAVRRV
LNTEANWRKFGVTDFFSCYLLFRNGSVSRVPVLMESRSFYTA
YLQRLSGLTREAQTTVAPTANKIAPTWWKLADRSKIYMADLES
ALHYILRIEVGRFPVLEGQRLVA
(N-term-329aa encoded by BC017692)

Reconstitution and Storage

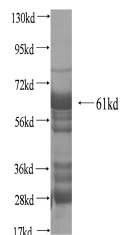
Reconstitution:
Reconstitute at 0.25 µg/µl in 200 µl sterile water for short-term storage.
Reconstitution with 200 µl 50% glycerol solution is recommended for longer term storage
(see Stability and Storage for more details).
If a different concentration is needed for your purposes please adjust the reconstitution
volume as required (please note: the ion concentration of the final solution will vary
according to the volume used).
Note: Centrifuge vial before opening. When reconstituting, gently pipet and wash down
the sides of the vial to ensure full recovery of the protein into solution.

Shipping:
The product is shipped with ice packs. Upon receipt, store it
immediately at -20°C to -80°C.

Stability and Storage

Aliquot and store at -20°C to -80°C for up to 6 months. Avoid freeze thaw cycles.

Selected Validation Data



quiescin Q6 sulfhydryl oxidase 1

For technical support and original validation data for this
product please contact:

T: 1 (888) 4PTGLAB (1-888-
478-4522) (toll free in USA),
or 1(312) 455-8498 (outside
USA)

E: proteintech@ptglab.com
W: ptglab.com

This product is exclusively available under
Proteintech Group brand and is not available to
purchase from any other manufacturer.