

FOR IN VITRO RESEARCH USE ONLY.  
NOT FOR USE IN HUMANS OR ANIMALS.

# RECOMBINANT HUMAN GLRX2

## Basic Information

**Catalog Number:**  
Ag4218

**Size:**  
50 µg

**Form:**  
Available lyophilized

**Species:**  
human

**Expression Source:**  
*E. coli*-derived, PGEX-4T, with N-terminal GST.

**Biological Activity:**  
Not tested

**Endotoxin Level:**  
Please contact the lab for more information

**Validated Application:**  
Blocking peptide

**Peptide Sequence:**  
PMVGIQETISDNCVMIFSKTSCSYCTMAKKLFHDMNVNYKVEL  
DLLEYGNQFDALYKMTGERTVPRIFVNGTFIGGATDTHRLHKE  
GKLLPLVHQCYLKKSKRKEFQ  
(16-164aa encoded by BC028113)

## Reconstitution and Storage

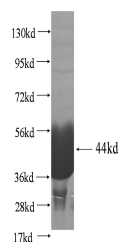
**Reconstitution:**  
Reconstitute at 0.25 µg/µl in 200 µl sterile water for short-term storage.  
Reconstitution with 200 µl 50% glycerol solution is recommended for longer term storage (see Stability and Storage for more details).  
If a different concentration is needed for your purposes please adjust the reconstitution volume as required (please note: the ion concentration of the final solution will vary according to the volume used).  
**Note:** Centrifuge vial before opening. When reconstituting, gently pipet and wash down the sides of the vial to ensure full recovery of the protein into solution.

**Shipping:**  
The product is shipped with ice packs. Upon receipt, store it immediately at -20°C to -80°C.

## Stability and Storage

Aliquot and store at -20°C to -80°C for up to 6 months. Avoid freeze thaw cycles.

## Selected Validation Data



glutaredoxin 2

For technical support and original validation data for this product please contact:

T: 1 (888) 4PTGLAB (1-888-478-4522) (toll free in USA),  
or 1(312) 455-8498 (outside USA)

E: [proteintech@ptglab.com](mailto:proteintech@ptglab.com)  
W: [ptglab.com](http://ptglab.com)

This product is exclusively available under Proteintech Group brand and is not available to purchase from any other manufacturer.