

FOR IN VITRO RESEARCH USE ONLY.  
NOT FOR USE IN HUMANS OR ANIMALS.

# RECOMBINANT HUMAN GTF2H3

## Basic Information

**Catalog Number:**

Ag6652

**Size:**

50 µg

**Form:**

Available lyophilized

**Species:**

human

**Expression Source:**

*E. coli*-derived, PGEX-4T, with N-terminal GST.

**Biological Activity:**

Not tested

**Endotoxin Level:**

Please contact the lab for more information

**Validated Application:**

Blocking peptide

**Peptide Sequence:**

KQALKESQFTLSKCIDAVMLGNSHLFMNRSNKLAVIASHIQESR  
FLYPGKNGRLGDFGDPGNPPEFNPSGSKDGKYELLTSANEVI  
VEEIKDLMTKSDIKGQHTETLLAGSLAKALCYIHRMNKEVKDNQE  
MKSRLVKAEDSALQYIMNFMNMFVAAQKQNILIDACVLDSDSG  
LLQQACDIT

(24-210aa encoded by BC065250)

## Reconstitution and Storage

**Reconstitution:**

Reconstitute at 0.25 µg/µl in 200 µl sterile water for short-term storage.

Reconstitution with 200 µl 50% glycerol solution is recommended for longer term storage (see Stability and Storage for more details).

If a different concentration is needed for your purposes please adjust the reconstitution volume as required (please note: the ion concentration of the final solution will vary according to the volume used).

Note: Centrifuge vial before opening. When reconstituting, gently pipet and wash down the sides of the vial to ensure full recovery of the protein into solution.

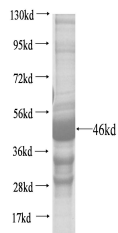
**Shipping:**

The product is shipped with ice packs. Upon receipt, store it immediately at -20°C to -80°C.

## Stability and Storage

Aliquot and store at -20°C to -80°C for up to 6 months. Avoid freeze thaw cycles.

## Selected Validation Data



general transcription factor IIIH,  
polypeptide 3, 34kDa

For technical support and original validation data for this product please contact:

T: 1 (888) 4PTGLAB (1-888-478-4522) (toll free in USA),  
or 1(312) 455-8498 (outside USA)

E: [proteintech@ptglab.com](mailto:proteintech@ptglab.com)  
W: [ptglab.com](http://ptglab.com)

This product is exclusively available under Proteintech Group brand and is not available to purchase from any other manufacturer.