

For Research Use Only

CoraLite® Plus 488-conjugated Septin 2 Polyclonal antibody

Catalog Number: CL488-11397

Featured Product



Basic Information

Catalog Number:

CL488-11397

Size:

100ul, Concentration: 1000 ug/ml by Nanodrop;

Source:

Rabbit

Isotype:

IgG

Immunogen Catalog Number:

AG1946

GenBank Accession Number:

BC014455

GeneID (NCBI):

4735

UNIPROT ID:

Q15019

Full Name:

septin 2

Calculated MW:

41 kDa

Observed MW:

45 kDa

Purification Method:

Antigen affinity purification

Recommended Dilutions:

IF/ICC 1:50-1:500

Excitation/Emission maxima wavelengths:

493 nm / 522 nm

Applications

Tested Applications:

IF/ICC, FC (Intra)

Species Specificity:

human, mouse, rat

Positive Controls:

IF/ICC : HepG2 cells,

Background Information

Septin 2, also named as DIFF6, KIAA0158, NEDD5 and SEPT2, belongs to the septin family. It is a filament-forming cytoskeletal GTPase. SEPT2 is required for normal organization of the actin cytoskeleton. It plays a role in ciliogenesis and collective cell movements. SEPT2 is coordinated expression with SEPT6 and SEPT7. (PMID:21737677)

Storage

Storage:

Store at -20°C. Avoid exposure to light. Stable for one year after shipment.

Storage Buffer:

PBS with 50% Glycerol, 0.05% Proclin300, 0.5% BSA, pH 7.3.

Aliquoting is unnecessary for -20°C storage

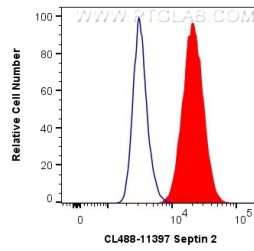
For technical support and original validation data for this product please contact:

T: 1 (888) 4PTGLAB (1-888-478-4522) (toll free in USA), or 1(312) 455-8498 (outside USA)

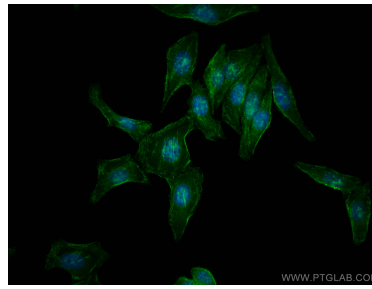
E: proteintech@ptglab.com
W: ptglab.com

This product is exclusively available under Proteintech Group brand and is not available to purchase from any other manufacturer.

Selected Validation Data



1X10⁶ MCF-7 cells were intracellularly stained with 0.4 ug CoraLite® Plus 488 Anti-Human Septin 2 (CL488-11397) (red), or 0.4 ug Control Antibody. Cells were fixed with 4% PFA and permeabilized with Flow Cytometry Perm Buffer (PF00011-C).



Immunofluorescent analysis of (4% PFA) fixed HepG2 cells using CoraLite® Plus 488 Septin 2 antibody (CL488-11397) at dilution of 1:200.