

For Research Use Only

# CoraLite® Plus 488-conjugated 14-3-3 Epsilon Polyclonal antibody

Catalog Number: CL488-11648

Featured Product



## Basic Information

### Catalog Number:

CL488-11648

### Size:

100ul , Concentration: 1000 ug/ml by Nanodrop;

### Source:

Rabbit

### Isotype:

IgG

### Immunogen Catalog Number:

AG2247

### GenBank Accession Number:

BC000179

### GeneID (NCBI):

7531

### UNIPROT ID:

P62258

### Full Name:

tyrosine 3-monooxygenase/tryptophan 5-monooxygenase activation protein, epsilon polypeptide

### Calculated MW:

255 aa, 29 kDa

### Observed MW:

29-32 kDa

### Purification Method:

Antigen affinity purification

### Excitation/Emission maxima wavelengths:

493 nm / 522 nm

## Applications

### Tested Applications:

FC (Intra)

### Species Specificity:

human, mouse, rat

## Background Information

14-3-3 Epsilon (also known as YWHA E) is a member of 14-3-3 proteins which were the first phosphoserine/phosphothreonine-binding proteins to be discovered. 14-3-3 family members interact with a wide spectrum of proteins and possess diverse functions. Mammals express seven distinct 14-3-3 isoforms (gamma, epsilon, beta, zeta, sigma, theta, tau) that form multiple homo- and hetero- dimers. 14-3-3 proteins display the highest expression levels in the brain, and have been implicated in several neurodegenerative diseases, including Alzheimer's disease and amyotrophic lateral sclerosis. This antibody was raised against full-length 14-3-3 Epsilon.

## Storage

### Storage:

Store at -20°C. Avoid exposure to light. Stable for one year after shipment.

### Storage Buffer:

PBS with 50% Glycerol, 0.05% Proclin300, 0.5% BSA, pH 7.3.

Aliquoting is unnecessary for -20°C storage

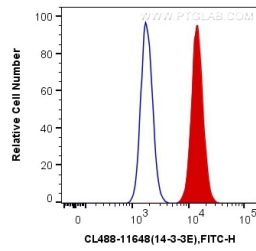
For technical support and original validation data for this product please contact:

T: 1 (888) 4PTGLAB (1-888-478-4522) (toll free in USA), or 1(312) 455-8498 (outside USA)

E: [proteintech@ptglab.com](mailto:proteintech@ptglab.com)  
W: [ptglab.com](http://ptglab.com)

This product is exclusively available under Proteintech Group brand and is not available to purchase from any other manufacturer.

## Selected Validation Data



1X10<sup>6</sup> HepG2 cells were intracellularly stained with 0.4 ug CoraLite® Plus 488 Anti-Human 14-3-3 Epsilon (CL488-11648) (red), or 0.4 ug Control Antibody. Cells were fixed with 4% PFA and permeabilized with Flow Cytometry Perm Buffer (PF00011-C).