

For Research Use Only

CoraLite® Plus 488-conjugated NEDD4L Polyclonal antibody

Catalog Number: CL488-13690

Featured Product



Basic Information

Catalog Number:

CL488-13690

Size:

100ul , Concentration: 1000 ug/ml by 23327

Nanodrop;

Source:

Rabbit

Isotype:

IgG

Immunogen Catalog Number:

AG4565

GenBank Accession Number:

BC032597

GeneID (NCBI):

23327

UNIPROT ID:

Q96PU5

Full Name:

neural precursor cell expressed,
developmentally down-regulated 4-
like

Calculated MW:

854 aa, 96 kDa

Observed MW:

112 kDa, 125 kDa

Purification Method:

Antigen affinity purification

Recommended Dilutions:

IF/ICC 1:50-1:500

Excitation/Emission maxima
wavelengths:

493 nm / 522 nm

Applications

Tested Applications:

IF/ICC

Species Specificity:

human, mouse, rat

Positive Controls:

IF/ICC : PC-3 cells,

Background Information

NEDD4L(E3 ubiquitin-protein ligase NEDD4-like) is also named as KIAA0439, NEDL3, Nedd4-2. It accepts ubiquitin from an E2 ubiquitin-conjugating enzyme in the form of a thioester and then directly transfers the ubiquitin to targeted substrates and is the principal ubiquitin ligase that selectively targets activated SMAD2 and SMAD3 for destruction (PMID:19917253). Nedd4L binds the PY motif of ENaC COOH terminals and catalyzes ubiquitination of the NH2 terminus of the protein for subsequent degradation (PMID:18268134). It has some isoforms produced by alternative splicing. This antibody may have cross reaction with NEDD4 due to the high homology of the antigen.

Storage

Storage:

Store at -20°C. Avoid exposure to light. Stable for one year after shipment.

Storage Buffer:

PBS with 50% glycerol, 0.05% Proclin300, 0.5% BSA, pH7.3

Aliquoting is unnecessary for -20°C storage

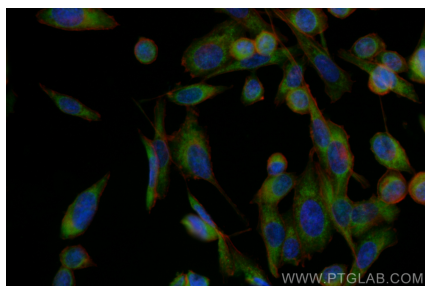
For technical support and original validation data for this product please contact:

T: 1 (888) 4PTGLAB (1-888-478-4522) (toll free
in USA), or 1(312) 455-8498 (outside USA)

E: proteintech@ptglab.com
W: ptglab.com

This product is exclusively available under Proteintech Group brand and is not available to purchase from any other manufacturer.

Selected Validation Data



Immunofluorescent analysis of (-20°C Ethanol)
fixed PC-3 cells using CoraLite® Plus 488 NEDD4L
antibody (CL488-13690) at dilution of 1:200.