

For Research Use Only

CoraLite® Plus 488-conjugated CEP63 Polyclonal antibody

Catalog Number: CL488-16268

Featured Product



Basic Information

Catalog Number:

CL488-16268

Size:

100ul , Concentration: 1000 ug/ml by Nanodrop;

Source:

Rabbit

Isotype:

IgG

Immunogen Catalog Number:

AG9335

GenBank Accession Number:

BC014050

GeneID (NCBI):

80254

UNIPROT ID:

Q96MT8

Full Name:

centrosomal protein 63kDa

Calculated MW:

703 aa, 81 kDa

Observed MW:

57-75 kDa

Purification Method:

Antigen affinity purification

Recommended Dilutions:

IF/ICC 1:50-1:500

Excitation/Emission maxima wavelengths:

493 nm / 522 nm

Applications

Tested Applications:

IF/ICC

Species Specificity:

human, mouse, rat, Canine

Positive Controls:

IF/ICC : MDCK cells,

Background Information

CEP63 is a 63 kDa centrosomal protein. It is required for normal spindle assembly. It maintains centrosome numbers through centrosomal recruitment of CEP152. CEP63 recruits CDK1 to centrosomes. It plays a role in DNA damage response. This antibody can recognize all the four isoforms of CEP63 (56 kDa, 58 kDa, 63 kDa and 81 kDa).

Storage

Storage:

Store at -20°C. Avoid exposure to light. Stable for one year after shipment.

Storage Buffer:

PBS with 50% Glycerol, 0.05% Proclin300, 0.5% BSA, pH 7.3.

Aliquoting is unnecessary for -20°C storage

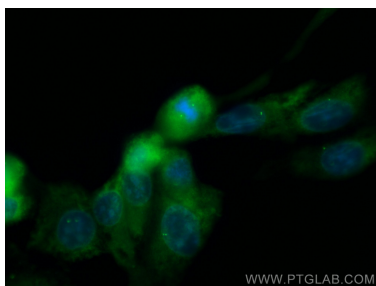
For technical support and original validation data for this product please contact:

T: 1 (888) 4PTGLAB (1-888-478-4522) (toll free in USA), or 1(312) 455-8498 (outside USA)

E: proteintech@ptglab.com
W: ptglab.com

This product is exclusively available under Proteintech Group brand and is not available to purchase from any other manufacturer.

Selected Validation Data



Immunofluorescent analysis of (-20°C Methanol) fixed MDCK cells using CoraLite® Plus 488 CEP63 antibody (CL488-16268) at dilution of 1:200.