

For Research Use Only

# CoraLite® Plus 488-conjugated ARL13B Polyclonal antibody



Catalog Number: CL488-17711

Featured Product

2 Publications

## Basic Information

Catalog Number:

CL488-17711

Size:

100ul , Concentration: 1000 ug/ml by Nanodrop;

Source:

Rabbit

Isotype:

IgG

Immunogen Catalog Number:

AG12015

GenBank Accession Number:

BC094725

GeneID (NCBI):

200894

UNIPROT ID:

Q3SXY8

Full Name:

ADP-ribosylation factor-like 13B

Calculated MW:

48 kDa

Purification Method:

Antigen affinity purification

Recommended Dilutions:

IF-P: 1:50-1:500

IF/ICC: 1:50-1:500

Excitation/Emission maximum wavelengths:

493 nm / 522 nm

## Applications

Tested Applications:

IF/ICC, IF-P

Cited Applications:

IF

Species Specificity:

human, mouse, rat, canine

Cited Species:

human, mouse

Positive Controls:

IF-P : mouse pancreas tissue,

IF/ICC : hTERT-RPE1 cells, MDCK cells

## Background Information

ARL13B, also named as ARL2L1, is a small ciliary G protein of the Ras superfamily. Localized in the cilia, it is required for cilium biogenesis and sonic hedgehog signaling. Defects in ARL13B are the cause of Joubert syndrome (JS) which is an autosomal recessive disorder characterized by a distinctive cerebellar malformation (PMID: 19906870). CoraLite488-Conjugated ARL13B antibody can be used to mark the cilia(green). Ex: 488nm, Em: 515nm

## Notable Publications

Author	Pubmed ID	Journal	Application
Alessia Di Nardo	34624412	Neurosci Res	IF
Ulduz Sobhiyafshar	38880659	Mol Oncol	IF

## Storage

Storage:

Store at -20°C. Avoid exposure to light. Stable for one year after shipment.

Storage Buffer:

PBS with 50% glycerol, 0.05% Proclin300, 0.5% BSA, pH7.3

Aliquoting is unnecessary for -20°C storage

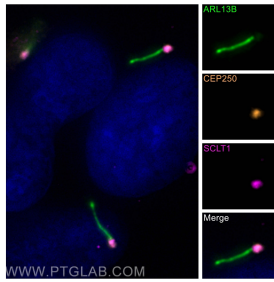
For technical support and original validation data for this product please contact:

T: 1 (888) 4PTGLAB (1-888-478-4522) (toll free in USA), or 1(312) 455-8498 (outside USA)

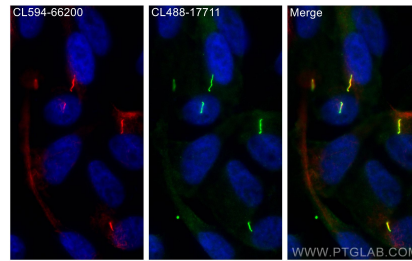
E: [proteintech@ptglab.com](mailto:proteintech@ptglab.com)  
W: [ptglab.com](http://ptglab.com)

This product is exclusively available under Proteintech Group brand and is not available to purchase from any other manufacturer.

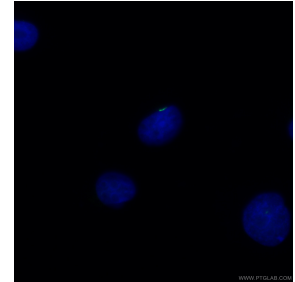
## Selected Validation Data



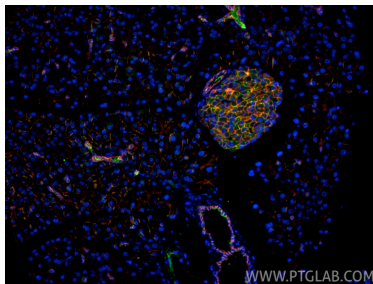
Immunofluorescent analysis of (-20°C Methanol) fixed hTERT-RPE1 cells using CoraLite® Plus 488 ARL13B antibody (CL488-17711) at dilution of 1:200, CEP250/CNAP1 antibody (14498-1-AP, orange), SCLT1 antibody (14875-1-AP, Magenta).



Immunofluorescent analysis of (4% PFA) fixed hTERT-RPE1 cells using CoraLite® Plus 488 ARL13B antibody (CL488-17711) at dilution of 1:200, CoraLite® 594 Acetyl-Tubulin (Lys40) antibody (CL594-66200, Clone: 7E5H8, red).



Immunofluorescent analysis of (4% PFA) fixed MDCK cells using CL488-17711 (ARL13B antibody) at dilution of 1:50 and CoraLite488-Conjugated AffiniPure Goat Anti-Rabbit IgG(H+L).



Immunofluorescent analysis of (4% PFA) fixed paraffin-embedded mouse pancreas tissue using CoraLite® Plus 488 ARL13B antibody (CL488-17711) at dilution of 1:200, E-cadherin antibody (20874-1-AP, red). Heat mediated antigen retrieval with Tris-EDTA buffer (pH 9.0).