

For Research Use Only

CoraLite®488-conjugated VEGF Polyclonal antibody



Catalog Number: CL488-19003

Featured Product

Basic Information

Catalog Number:

CL488-19003

Size:

100UL, Concentration: 1000 µg/ml by 7422

Nanodrop;

Source:

Rabbit

Isotype:

IgG

Immunogen Catalog Number:

AG13500

GenBank Accession Number:

BC065522

GeneID (NCBI):

7422

Full Name:

vascular endothelial growth factor A

Calculated MW:

412 aa, 46 kDa

Purification Method:

Antigen affinity purification

Recommended Dilutions:

IF 1:50-1:500

Excitation/Emission maxima

wavelengths:

488 nm/515 nm

Applications

Tested Applications:

IF

Species Specificity:

human

Positive Controls:

IF : HeLa cells,

Background Information

VEGFA, also named as VEGF or VPF, belongs to the PDGF/VEGF growth factor family. It is a growth factor active in angiogenesis, vasculogenesis and endothelial cell growth. VEGFA induces endothelial cell proliferation, promotes cell migration, inhibits apoptosis and induces permeabilization of blood vessels. It binds to the FLT1/VEGFR1 and KDR/VEGFR2 receptors, heparan sulfate and heparin. Defects in VEGFA are associated with microvascular complications of diabetes type 1 (MVC1D1). VEGFA has 17 isoforms with MW from 16 to 45 kDa. Some isoforms have homodimer forms (e.g.; VEGFA189 38kDa or VEGFA110 34kDa). VEGF-A exists in at least seven homodimeric isoforms. The monomers consist of 121, 145, 148, 165, 183, 189, or 206 amino acids (PMID:15602010). This antibody can recognize all VEGFA isoforms.

Storage

Storage:

Store at -20°C. Avoid exposure to light.

Storage Buffer:

PBS with 50% Glycerol, 0.05% Proclin300, 0.5% BSA, pH 7.3.

Aliquoting is unnecessary for -20°C storage

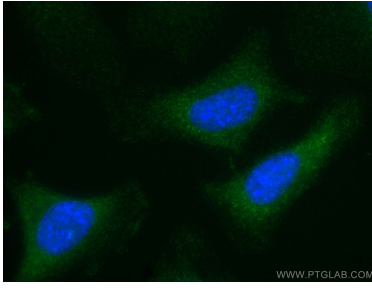
For technical support and original validation data for this product please contact:

T: 1 (888) 4PTGLAB (1-888-478-4522) (toll free in USA), or 1(312) 455-8498 (outside USA)

E: proteintech@ptglab.com
W: ptglab.com

This product is exclusively available under Proteintech Group brand and is not available to purchase from any other manufacturer.

Selected Validation Data



Immunofluorescent analysis of (-20°C Ethanol) fixed HeLa cells using CoraLite®488 VEGF antibody (CL488-19003) at dilution of 1:100.