

For Research Use Only

# CoraLite® Plus 488-conjugated CPT1B-specific Polyclonal antibody

Catalog Number: CL488-22170

Featured Product



## Basic Information

### Catalog Number:

CL488-22170

### Size:

100ul , Concentration: 1000 ug/ml by Nanodrop;

### Source:

Rabbit

### Isotype:

IgG

### Immunogen Catalog Number:

AG17840

### GenBank Accession Number:

BC131570

### GeneID (NCBI):

1375

### UNIPROT ID:

Q92523

### Full Name:

carnitine palmitoyltransferase 1B (muscle)

### Calculated MW:

567 aa, 64 kDa

### Observed MW:

75-85 kDa

### Purification Method:

Antigen affinity purification

### Recommended Dilutions:

IF-P 1:50-1:500

### Excitation/Emission maxima wavelengths:

493 nm / 522 nm

## Applications

### Tested Applications:

IF-P

### Species Specificity:

human, mouse, rat

### Positive Controls:

IF-P : mouse heart tissue,

## Background Information

Carnitine palmitoyltransferases (CPTs) mediate the transport of long chain fatty acyl groups into the mitochondrial matrix to undergo  $\beta$ -oxidation. Type I CPT resides in the outer mitochondrial membrane. Mammalian tissues express three isoforms: CPT1A (liver), CPT1B (muscle and heart), and CPT1C (brain). Several isoforms of CPT1B exist due to the alternative splicing, with predicted MW of 88/84/79/66 kDa.

## Storage

### Storage:

Store at -20°C. Avoid exposure to light. Stable for one year after shipment.

### Storage Buffer:

PBS with 50% Glycerol, 0.05% Proclin300, 0.5% BSA, pH 7.3.

Aliquoting is unnecessary for -20°C storage

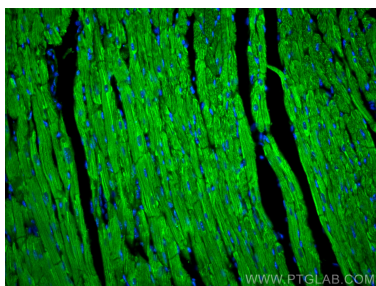
For technical support and original validation data for this product please contact:

T: 1 (888) 4PTGLAB (1-888-478-4522) (toll free in USA), or 1(312) 455-8498 (outside USA)

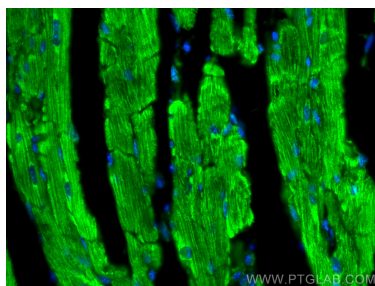
E: [proteintech@ptglab.com](mailto:proteintech@ptglab.com)  
W: [ptglab.com](http://ptglab.com)

This product is exclusively available under Proteintech Group brand and is not available to purchase from any other manufacturer.

## Selected Validation Data



Immunofluorescent analysis of (4% PFA) fixed mouse heart tissue using Coralite® Plus 488 CPT1B-specific antibody (CL488-22170) at dilution of 1:200.



Immunofluorescent analysis of (4% PFA) fixed mouse heart tissue using Coralite® Plus 488 CPT1B-specific antibody (CL488-22170) at dilution of 1:200.