

For Research Use Only

CoraLite® Plus 488-conjugated NKCC1/SLC12A2 Polyclonal antibody

Catalog Number: CL488-28055



Basic Information

Catalog Number:

CL488-28055

Size:

100ul , Concentration: 1000 ug/ml by Nanodrop;

Source:

Rabbit

Isotype:

IgG

Immunogen Catalog Number:

AG27895

GenBank Accession Number:

BC033003

GeneID (NCBI):

6558

UNIPROT ID:

P55011

Full Name:

solute carrier family 12 (sodium/potassium/chloride transporters), member 2

Calculated MW:

131 kDa

Observed MW:

160 kDa

Purification Method:

Antigen affinity purification

Recommended Dilutions:

IF/ICC 1:50-1:500

Excitation/Emission maxima wavelengths:

493 nm / 522 nm

Applications

Tested Applications:

IF/ICC

Species Specificity:

human

Positive Controls:

IF/ICC : U2OS cells, A549 cells

Background Information

The Na-K-Cl cotransporter sodium-potassium-chloride cotransporter 1 (NKCC1), encoded by the SLC12A2 gene, is an intensively studied member of the CCC family. NKCC1 is a membrane protein and plays fundamental roles in regulating trans-epithelial ion movement, cell volume, chloride homeostasis and neuronal excitability. NKCC1 assembles into a dimer, with the first ten transmembrane (TM) helices harboring the transport core and TM11-TM12 helices lining the dimer interface (PMID: 32081947). The observed molecular weight of NKCC1 is about 140 kDa, glycosylated NKCC1 is detected a band at 170 kDa (PMID: 22723696).

Storage

Storage:

Store at -20°C. Avoid exposure to light. Stable for one year after shipment.

Storage Buffer:

PBS with 50% glycerol, 0.05% Proclin300, 0.5% BSA, pH7.3

Aliquoting is unnecessary for -20°C storage

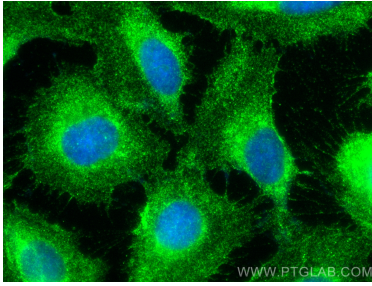
For technical support and original validation data for this product please contact:

T: 1 (888) 4PTGLAB (1-888-478-4522) (toll free in USA), or 1(312) 455-8498 (outside USA)

E: proteintech@ptglab.com
W: ptglab.com

This product is exclusively available under Proteintech Group brand and is not available to purchase from any other manufacturer.

Selected Validation Data



Immunofluorescent analysis of (-20°C Ethanol)
fixed U2OS cells using Coralite® Plus 488
NKCC1/SLC12A2 antibody (CL488-28055) at
dilution of 1:200.