

For Research Use Only

# CoraLite® Plus 488-conjugated BCL10 Polyclonal antibody

Catalog Number: CL488-50180

Featured Product



## Basic Information

Catalog Number:

CL488-50180

Size:

100ul , Concentration: 1000 ug/ml by Nanodrop;

Source:

Rabbit

Isotype:

IgG

Immunogen Catalog Number:

AG0037

GenBank Accession Number:

BC053617

GeneID (NCBI):

8915

UNIPROT ID:

O95999

Full Name:

B-cell CLL/lymphoma 10

Calculated MW:

233 aa, 26 kDa

Observed MW:

26-32 kDa

Purification Method:

Antigen affinity purification

Recommended Dilutions:

IF/ICC: 1:50-1:500

FC (Intra): 0.20 ug per 10<sup>6</sup> cells in a 100 µl suspension

Excitation/Emission maxima wavelengths:

493 nm / 522 nm

## Applications

Tested Applications:

IF/ICC, FC (Intra)

Species Specificity:

human, mouse, rat

Positive Controls:

IF/ICC : A549 cells,

FC (Intra) : Jurkat cells,

## Background Information

The gene encoding BCL10 was identified by its recurrent translocation t(1;14)(p22;q32) in a case of mucosa-associated lymphoid tissue (MALT) lymphoma. BCL10 contains a caspase recruitment domain (CARD), and has been shown to induce apoptosis and to activate NF-kappaB.

## Storage

Storage:

Store at -20°C. Avoid exposure to light. Stable for one year after shipment.

Storage Buffer:

PBS with 50% glycerol, 0.05% Proclin300, 0.5% BSA, pH7.3

Aliquoting is unnecessary for -20°C storage

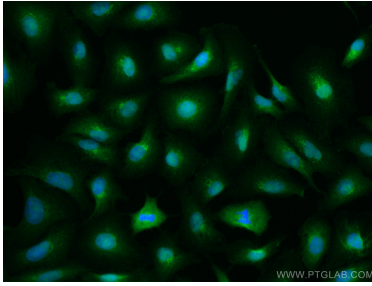
For technical support and original validation data for this product please contact:

T: 1 (888) 4PTGLAB (1-888-478-4522) (toll free in USA), or 1(312) 455-8498 (outside USA)

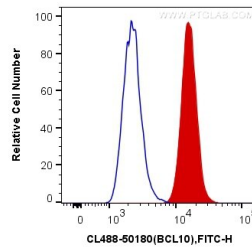
E: [proteintech@ptglab.com](mailto:proteintech@ptglab.com)  
W: [ptglab.com](http://ptglab.com)

This product is exclusively available under Proteintech Group brand and is not available to purchase from any other manufacturer.

## Selected Validation Data



Immunofluorescent analysis of (4% PFA) fixed A549 cells using CoraLite® Plus 488 BCL10 antibody (CL488-50180) at dilution of 1:200.



1X10<sup>6</sup> Jurkat cells were intracellularly stained with 0.2 ug CoraLite® Plus 488 Anti-Human BCL10 (CL488-50180) (red), or 0.2 ug Control Antibody. Cells were fixed with 4% PFA and permeabilized with Flow Cytometry Perm Buffer (PF00011-C).