

For Research Use Only

# CoraLite®488-conjugated smooth muscle actin specific Polyclonal antibody



Catalog Number: **CL488-55135**

## Basic Information

<b>Catalog Number:</b> CL488-55135	<b>GenBank Accession Number:</b> NM_001613	<b>Purification Method:</b> Antigen affinity purification
<b>Size:</b> 100ul , Concentration: 1000 µg/ml by Nanodrop;	<b>GeneID (NCBI):</b> 59	<b>Recommended Dilutions:</b> IF 1:50-1:500
<b>Source:</b> Rabbit	<b>Full Name:</b> actin, alpha 2, smooth muscle, aorta	<b>Excitation/Emission maxima wavelengths:</b> 488 nm/515 nm
<b>Isotype:</b> IgG	<b>Calculated MW:</b> 42 kDa	
	<b>Observed MW:</b> 42 kDa	

## Applications

**Tested Applications:**

IF

**Species Specificity:**

human, mouse, rat

**Positive Controls:**

IF : mouse heart tissue,

## Background Information

ACTA2, also named as a-SMA,AAT6;ACTSA belongs to the actin family. Actins are highly conserved proteins that are involved in various types of cell motility and are ubiquitously expressed in all eukaryotic cells. Defects in ACTA2 are the cause of aortic aneurysm familial thoracic type 6 (AAT6). The immunogen of this antibody is a specific domain of ACTA2. This antibody stains the aorta only.

## Storage

**Storage:**

Store at -20°C. Avoid exposure to light.

**Storage Buffer:**

PBS with 50% Glycerol, 0.05% Proclin300, 0.5% BSA, pH 7.3.

Aliquoting is unnecessary for -20°C storage

For technical support and original validation data for this product please contact:

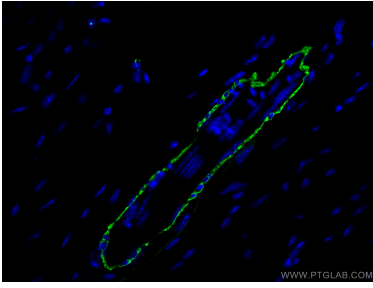
T: 1 (888) 4PTGLAB (1-888-478-4522) (toll free  
in USA), or 1(312) 455-8498 (outside USA)

E: [proteintech@ptglab.com](mailto:proteintech@ptglab.com)  
W: [ptglab.com](http://ptglab.com)

This product is exclusively available under Proteintech Group brand and is not available to purchase from any other manufacturer.

---

## Selected Validation Data



Immunofluorescent analysis of (4% PFA) fixed mouse heart tissue using CoraLite®488 smooth muscle actin-specific antibody (CL488-55135) at dilution of 1:200.