

For Research Use Only

CoraLite® Plus 488-conjugated KEAP1 Monoclonal antibody

Catalog Number: CL488-60027

Featured Product

1 Publications



Basic Information

Catalog Number:

CL488-60027

Size:

100ul , Concentration: 1000 ug/ml by Nanodrop;

Source:

Mouse

Isotype:

IgA

Immunogen Catalog Number:

AG0779

GenBank Accession Number:

BC002930

GeneID (NCBI):

9817

UNIPROT ID:

Q14145

Full Name:

kelch-like ECH-associated protein 1

Calculated MW:

624 aa, 70 kDa

Observed MW:

70 kDa

Purification Method:

Thiophilic affinity chromatograph

CloneNo.:

4G10H9

Recommended Dilutions:

IF/ICC 1:50-1:500

Excitation/Emission maxima wavelengths:

493 nm / 522 nm

Applications

Tested Applications:

IF/ICC

Cited Applications:

IF

Species Specificity:

human, mouse, rat

Cited Species:

mouse

Positive Controls:

IF/ICC : HeLa cells,

Background Information

KEAP1, also named as INRF2, KIAA0132 and KLHL19, is part of a multiprotein complex that contains the CUL3-ROC1 ubiquitin ligase, which can ubiquitinate the N-terminal domain of NRF2. Two molecules of KEAP1 bind to two distinct sites in the N-terminal region of NRF2, the ETGE and DLG sites, which affect the KEAP1-NRF2 interaction and/or its physiological consequences. KEAP1 retains NFE2L2/NRF2 in the cytosol. It functions as substrate adapter protein for the E3 ubiquitin ligase complex formed by CUL3 and RBX1. It also retains BPTF in the cytosol. This antibody is a mouse monoclonal antibody raised against residues near the C terminus of human KEAP1.

Notable Publications

Author	Pubmed ID	Journal	Application
Lin Zhao	38150877	Biomed Pharmacother	IF

Storage

Storage:

Store at -20°C. Avoid exposure to light. Stable for one year after shipment.

Storage Buffer:

PBS with 50% Glycerol, 0.05% Proclin300, 0.5% BSA, pH 7.3.

Aliquoting is unnecessary for -20°C storage

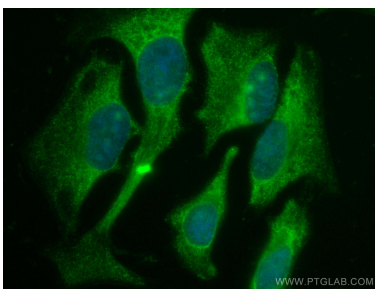
For technical support and original validation data for this product please contact:

T: 1 (888) 4PTGLAB (1-888-478-4522) (toll free in USA), or 1(312) 455-8498 (outside USA)

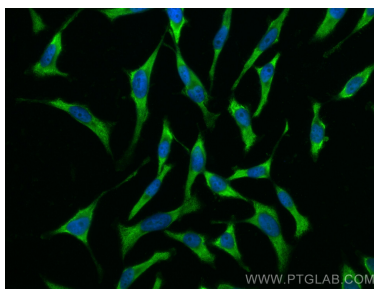
E: proteintech@ptglab.com
W: ptglab.com

This product is exclusively available under Proteintech Group brand and is not available to purchase from any other manufacturer.

Selected Validation Data



Immunofluorescent analysis of (-20°C Ethanol) fixed HeLa cells using CoraLite® Plus 488 KEAP1 antibody (CL488-60027, Clone: 4G10H9) at dilution of 1:200.



Immunofluorescent analysis of (-20°C Ethanol) fixed HeLa cells using CoraLite® Plus 488 KEAP1 antibody (CL488-60027, Clone: 4G10H9) at dilution of 1:200.