

For Research Use Only

# CoraLite®488-conjugated ATF4 Monoclonal antibody



Catalog Number: CL488-60035

## Basic Information

<b>Catalog Number:</b> CL488-60035	<b>GenBank Accession Number:</b> BC022088	<b>Purification Method:</b> Protein G purification
<b>Size:</b> 100ul , Concentration: 1000 µg/ml by Nanodrop and 1000 µg/ml by Bradford method using BSA as the standard;	<b>GeneID (NCBI):</b> 468	<b>CloneNo.:</b> 3E4C5
<b>Source:</b> Mouse	<b>Full Name:</b> activating transcription factor 4 (tax- responsive enhancer element B67)	<b>Recommended Dilutions:</b> IF 1:50-1:500
<b>Isotype:</b> IgG1	<b>Calculated MW:</b> 39 kDa	<b>Excitation/Emission maxima wavelengths:</b> 488 nm/515 nm
<b>Immunogen Catalog Number:</b> AG1279		

## Applications

<b>Tested Applications:</b> FC, IF	<b>Positive Controls:</b> IF : HeLa cells,
<b>Species Specificity:</b> human, mouse	

## Background Information

ATF4 is a transcription factor, that accumulates predominantly in osteoblasts, where it regulates terminal osteoblast differentiation and bone formation. As a basic leucine-zipper (bZip) transcription factor, ATF4 can regulate amino acid metabolism, cellular redox state, and anti-stress responses. It also regulates age-related and diet-induced obesity and glucose homeostasis in mammals, and has conserved metabolic functions in flies. Due to its location at chromosome 22q13, a region linked to schizophrenia, ATF4 is considered as a positional candidate gene for schizophrenia. Otherwise, since ATF4 is induced by tumour microenvironmental factors, and regulates processes relevant to cancer progression, it might serve as a potential therapeutic target in cancer. This antibody is a mouse monoclonal antibody raised against full length human ATF4 antigen. The antibody recognizes the 38 kd ATF4 protein and its phosphorylated forms (50 kd). This antibody is conjugated with CL488, Ex/Em 488 nm/515 nm.

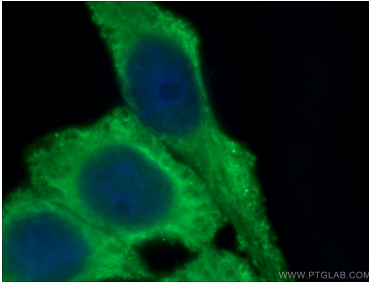
## Storage

**Storage:**  
Store at -20°C. Avoid exposure to light. Stable for one year after shipment.  
**Storage Buffer:**  
PBS with 0.1% sodium azide and 50% glycerol pH 7.3.  
**Aliquoting is unnecessary for -20°C storage**

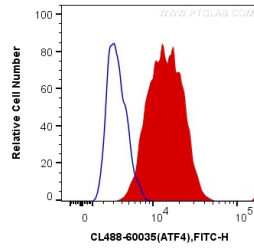
For technical support and original validation data for this product please contact:  
T: 1 (888) 4PTGLAB (1-888-478-4522) (toll free in USA), or 1(312) 455-8498 (outside USA)  
E: proteintech@ptglab.com  
W: ptglab.com

This product is exclusively available under Proteintech Group brand and is not available to purchase from any other manufacturer.

## Selected Validation Data



Immunofluorescent analysis of (-20°C Acetone) fixed HeLa cells using CL488-60035 (ATF4 antibody) at dilution of 1:50.



1X10<sup>6</sup> HeLa cells were intracellularly stained with 0.4 ug CoraLite®488 Anti-Human ATF4 (CL488-60035, Clone:3E4C5) (red), or 0.4 ug Mouse IgG1 Isotype Control (CL488-66360, Clone: T1F8D3F10) (blue). Cells were fixed with 4% PFA and permeabilized with Flow Cytometry Perm Buffer.