

For Research Use Only

# CoraLite®488-conjugated Annexin A2 Monoclonal antibody



Catalog Number: **CL488-60051**

Featured Product

## Basic Information

Catalog Number:  
CL488-60051

Size:  
100UL, Concentration: 2000 µg/ml by 302  
Bradford method using BSA as the standard;

Source:  
Mouse

Isotype:  
IgG2b

Immunogen Catalog Number:  
AG1777

GenBank Accession Number:  
BC016774

GeneID (NCBI):

302

Full Name:  
annexin A2

Calculated MW:  
339 aa, 39 kDa

Observed MW:  
35-38 kDa

Purification Method:  
Protein A purification

CloneNo.:  
3H1B11

Recommended Dilutions:  
IF 1:50-1:500

Excitation/Emission maxima  
wavelengths:  
488 nm/515 nm

## Applications

Tested Applications:  
IF, ELISA

Species Specificity:  
human, mouse

Positive Controls:

IF : MCF-7 cells,

## Background Information

Annexin A2 (ANXA2), also named Annexin-2 or Lipocortin II, is a Ca<sup>2+</sup> binding protein that is up-regulated in virally transformed cell lines and human tumors. This calcium-regulated membrane-binding protein, whose affinity for calcium is greatly enhanced by anionic phospholipids, may cross-link plasma membrane phospholipids with actin and the cytoskeleton and be involved with exocytosis. Heat-stress response may also involve Annexin-2.

## Storage

Storage:

Store at -20°C. Avoid exposure to light. Stable for one year after shipment.

Storage Buffer:

PBS with 50% Glycerol, 0.05% Proclin300, 0.5% BSA, pH 7.3.

Aliquoting is unnecessary for -20°C storage

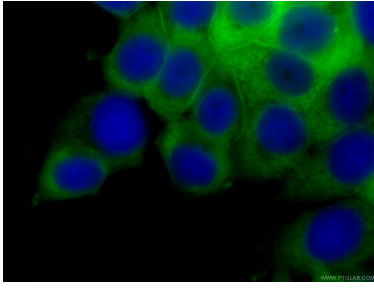
For technical support and original validation data for this product please contact:

T: 1 (888) 4PTGLAB (1-888-478-4522) (toll free in USA), or 1(312) 455-8498 (outside USA)

E: [proteintech@ptglab.com](mailto:proteintech@ptglab.com)  
W: [ptglab.com](http://ptglab.com)

This product is exclusively available under Proteintech Group brand and is not available to purchase from any other manufacturer.

## Selected Validation Data



Immunofluorescent analysis of (-20°C Ethanol) fixed MCF-7 cells using CL488-60051 (Annexin A2 antibody) at dilution of 1:100.