

For Research Use Only

CoraLite® Plus 488-conjugated MGP Monoclonal antibody

Catalog Number: CL488-60055

Featured Product



Basic Information

Catalog Number:

CL488-60055

Size:

100ul , Concentration: 1000 ug/ml by Nanodrop;

Source:

Mouse

Isotype:

IgG2a

Immunogen Catalog Number:

AG1091

GenBank Accession Number:

BC005272

GeneID (NCBI):

4256

UNIPROT ID:

P08493

Full Name:

matrix Gla protein

Calculated MW:

103 aa, 13 kDa

Observed MW:

12 kDa

Purification Method:

Protein A purification

CloneNo.:

1A1C3

Recommended Dilutions:

IF/ICC 1:50-1:500

Excitation/Emission maxima wavelengths:

493 nm / 522 nm

Applications

Tested Applications:

IF/ICC

Species Specificity:

human, mouse

Positive Controls:

IF/ICC : MDA-MB-231 cells,

Background Information

Matrix Gla protein (MGP) is a vitamin K-dependent, extracellular matrix protein. MGP plays a pivotal role in preventing soft tissue calcification and local mineralization of the vascular wall. Vitamin K deficiency leads to inactive uncarboxylated MGP (ucMGP), which accumulates at sites of arterial calcification. However MGP is synthesized in many tissues and is especially enriched in embryonic tissues and in cancer cells. Defects in MGP are the cause of Keutel syndrome (KS), which is an autosomal recessive disorder characterized by abnormal cartilage calcification, peripheral pulmonary stenosis neural hearing loss and midfacial hypoplasia.

Storage

Storage:

Store at -20°C. Avoid exposure to light. Stable for one year after shipment.

Storage Buffer:

PBS with 50% Glycerol, 0.05% Proclin300, 0.5% BSA, pH 7.3.

Aliquoting is unnecessary for -20°C storage

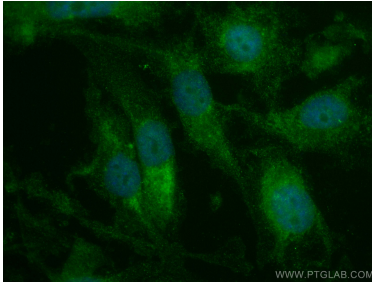
For technical support and original validation data for this product please contact:

T: 1 (888) 4PTGLAB (1-888-478-4522) (toll free in USA), or 1(312) 455-8498 (outside USA)

E: proteintech@ptglab.com
W: ptglab.com

This product is exclusively available under Proteintech Group brand and is not available to purchase from any other manufacturer.

Selected Validation Data



Immunofluorescent analysis of (4% PFA) fixed MDA-MB-231 cells using CoraLite® Plus 488 MGP antibody (CL488-60055, Clone: 1A1C3) at dilution of 1:200.