

For Research Use Only

CoraLite® Plus 488-conjugated Syntaxin 6 Monoclonal antibody

Catalog Number:CL488-60059



Basic Information

Catalog Number:

CL488-60059

Size:

100ul , Concentration: 1000 µg/ml by
Nanodrop;

Source:

Mouse

Isotype:

IgG1

Immunogen Catalog Number:

AG1284

GenBank Accession Number:

BC009944

GeneID (NCBI):

10228

UNIPROT ID:

O43752

Full Name:

syntaxin 6

Calculated MW:

29 kDa

Observed MW:

29 kDa

Purification Method:

Protein G purification

CloneNo.:

2B6G4

Recommended Dilutions:

IF-P 1:50-1:500

IF/ICC 1:50-1:500

Excitation/Emission maxima
wavelengths:

493 nm / 522 nm

Applications

Tested Applications:

IF/ICC, IF-P

Species Specificity:

human, mouse, rat

Positive Controls:

IF-P : mouse brain tissue,

IF/ICC : PC-12 cells,

Background Information

Syntaxin-6 (STX6) is a SNARE protein located in the trans-Golgi network (TGN) and endosomes. It associates with a variety of SNARE proteins and is involved in intracellular vesicle trafficking. STX6 is required for sorting proteins from endosomes toward either the TGN or lysosomes.

Storage

Storage:

Store at -20°C. Avoid exposure to light. Stable for one year after shipment.

Storage Buffer:

PBS with 50% Glycerol, 0.05% Proclin300, 0.5% BSA, pH 7.3.

Aliquoting is unnecessary for -20°C storage

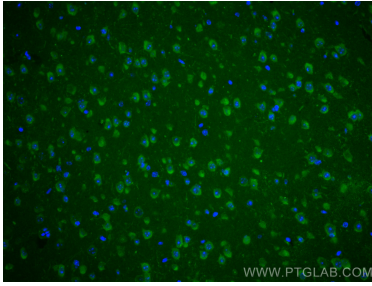
For technical support and original validation data for this product please contact:

T: 1 (888) 4PTGLAB (1-888-478-4522) (toll free
in USA), or 1(312) 455-8498 (outside USA)

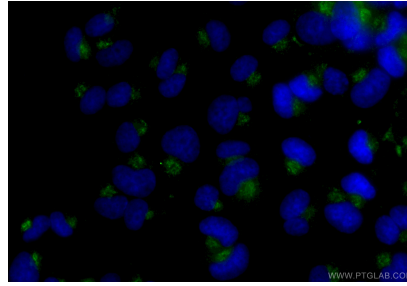
E: proteintech@ptglab.com
W: ptglab.com

This product is exclusively available under Proteintech Group brand and is not available to purchase from any other manufacturer.

Selected Validation Data



Immunofluorescent analysis of (4% PFA) fixed mouse brain tissue using CoraLite® Plus 488 Syntaxin 6 antibody (CL488-60059, Clone: 2B6G4) at dilution of 1:200.



Immunofluorescent analysis of (4% PFA) fixed PC-12 cells using CoraLite® Plus 488 Syntaxin 6 antibody (CL488-60059, Clone: 2B6G4) at dilution of 1:200.