

For Research Use Only

CoraLite® Plus 488-conjugated PAX8 Monoclonal antibody

Catalog Number: CL488-60145

1 Publications



Basic Information

Catalog Number:

CL488-60145

GenBank Accession Number:

BC001060

Purification Method:

Protein A purification

Size:

100ul, Concentration: 1000 ug/ml by Nanodrop;

GeneID (NCBI):

7849

CloneNo.:

4H7B3

Source:

Mouse

UNIPROT ID:

Q06710

Recommended Dilutions:

IF-P: 1:50-1:500

IF/ICC: 1:50-1:500

Isotype:

IgG2b

Full Name:

paired box 8

Excitation/Emission maxima wavelengths:

493 nm / 522 nm

Immunogen Catalog Number:

AG0306

Calculated MW:

48 kDa

Applications

Tested Applications:

IF/ICC, IF-P

Positive Controls:

IF-P : human ovary tumor tissue, mouse kidney tissue

Species Specificity:

human, mouse

IF/ICC : SKOV-3 cells,

Cited Species:

mouse

Background Information

PAX8 is a member of the paired box (PAX) family of transcription factors, typically containing a paired box domain and a paired-type homeodomain. It is expressed during organogenesis of the thyroid gland, kidney and Mullerian system. It is thought to regulate the expression of Wilms tumor suppressor (WT1) gene and mutations in PAX8 have been associated with Wilms tumor cells, thyroid and ovarian carcinomas. PAX8 is a useful marker in distinguishing ovarian carcinomas from mammary carcinomas (PMID: 18724243). PAX8 is expressed in a high percentage of ovarian serous, endometrioid, and clear cell carcinomas, but only rarely in primary ovarian mucinous adenocarcinomas.

PAX8 has 5 isoforms with calculated MW 31kd, 34kd, 41kd, 43kd and 48kd. And there is a 60kd band corresponding to the electrophoretic mobility of PAX8 (PMID:15650356).

Notable Publications

Author	Pubmed ID	Journal	Application
Yu-Hsun Chang	37998370	Cells	

Storage

Storage:

Store at -20°C. Avoid exposure to light. Stable for one year after shipment.

Storage Buffer:

PBS with 50% glycerol, 0.05% Proclin300, 0.5% BSA, pH7.3

Aliquoting is unnecessary for -20°C storage

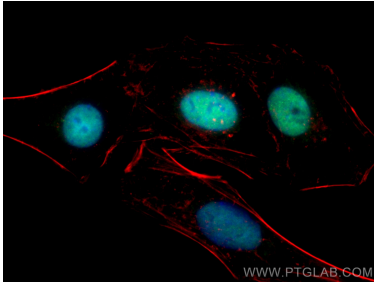
For technical support and original validation data for this product please contact:

T: 1 (888) 4PTGLAB (1-888-478-4522) (toll free in USA), or 1(312) 455-8498 (outside USA)

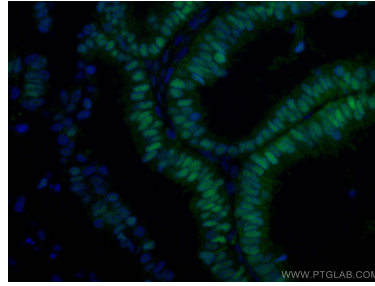
E: proteintech@ptglab.com
W: ptglab.com

This product is exclusively available under Proteintech Group brand and is not available to purchase from any other manufacturer.

Selected Validation Data



Immunofluorescent analysis of (4% PFA) fixed SKOV-3 cells using CoraLite® Plus 488 PAX8 antibody (CL488-60145, Clone: 4H7B3) at dilution of 1:800, CL594-Phalloidin (red).



Immunofluorescent analysis of (4% PFA) fixed human ovary tumor tissue using CoraLite® Plus 488 PAX8 antibody (CL488-60145, Clone: 4H7B3) at dilution of 1:100.